



INTRODUCTION

The contents of this book will best be understood if read in conjunction with the master KING Toronto book where we delve into the origins of the project, how it fits into the surrounding context and the overarching ambitions that we have for the project. On completion of the master book, we have put together a separate book for each of the four mountains of KING Toronto. Because of the unique characteristics of this project, it does not lend itself well to being summarized or condensed so please bear with us. KING Toronto really is, in every respect, a project that is all about its unique and fine-grain characteristics. The lobbies for each of the four mountains (North, East, West and South) draws from different design inspiration and surprisingly 80% of the homes within the project are unique.

What Moshe Safdie was trying to accomplish with Habitat 67 was to use architecture as a means to create community. We are trying to achieve the same primary goal, but at the same time allowing the individual resident to express their individuality. On one hand, we are embracing the idea of bringing people together into a real community of like-minded residents who amongst other characteristics, share an interest in great architecture and a love for this wonderful neighbourhood. On the other hand, we are recognizing that every individual wants to maintain what makes us unique and to create the circumstances to allow this self expression to blossom.

When we gave Bjarke Ingels and his team at BIG the original design brief, it is these two objectives that were at the core of what we wanted to achieve. Another element of the design brief was the idea of using the modernity of the form, in this case the four mountain peaks, to compliment and celebrate the beautiful historic buildings that we have been blessed with on the site, but never to mimic them. Similarly, the materiality of the glass blocks was chosen to compliment and celebrate the historic brick and beam buildings.

To layer on top of this, the mandate that we gave to our passionate landscape architect, Marc Ryan from Public Work, was to bring as much nature back into the city as possible and to strengthen one of the best characteristics of this neighbourhood of King West – a neighbourhood characterized by diverse streets, laneways and courtyards – its fine grain typology.

The interior architecture for this project, led by Francesca Portesine from BIG, is from the same team that led the design on Vancouver House. It is always advantageous to be able to continue a conversation rather than start one from the beginning. This has allowed us to take the principles of Gesamtkunstwerk that we adopted on Vancouver House and to continue to explore this philosophy here on KING Toronto. I hope that as you flip through the pages of both the master book and this

one, that you see our continued effort to adopt the principles of Gesamtkunstwerk, the Total Work of Art, into as much of this project as we can. Similar to Vancouver House, we are just getting started and we will continue to find opportunities throughout the construction process to strengthen this core principle.

Thank you to our partner Allied and all of the willing collaborators that have allowed us to enjoy this journey.

— Ian Gillespie *Founder, Westbank*





SUCCI

TIUNK

511

TABLE OF
CONTENTS

WESTBANK	10
INTERIOR ARCHITECTURE	18
FURNISHINGS	102
FLOORPLANS	128



WE ARE NOT A DEVELOPER

We are not motivated by the same things most developers are. Our priorities are different. Development is just one thing that we do. It affords us other – often more interesting – opportunities.

Our aim is to become a company unlike any other. Diversity is at our heart and is the key to how we set ourselves apart.

We embrace our eclectic nature, broadening our interests, actively pursuing interesting collaborations outside property: art, culture, technology, sustainability, infrastructure, etc.

We very publicly define ourselves through the things we do. Always allying ourselves with those who share our values.

We explain to the world who we are through the things we do.

Westbank goes beyond just creating buildings; we acknowledge the surroundings and the existing community and create a new addition to the space and community that improves and gives back. Ultimately, we aim to create a positive impact on how people live today.

We see the opportunity to claim this holistic approach to development as the essence of our brand and to call it out. Just like Bauhaus created rules and influenced Modernism, Westbank could influence where culture is today and goes tomorrow.



CULTURE IS OUR CURRENCY

We are a culture company.

Everything we do serves to propagate culture.

We define our philosophy through collaboration and association.

We invite unique and interesting collaboration between cultural pioneers, showcasing their work, using it to inform and influence our projects.

We take on the role of patron of culture, and distribute it globally.

In doing so, we define ourselves as more than just a real estate company, or a property development company – we become a bank that deals exclusively in cultural transactions, a global force for the exposition and propagation of cultural movements.



The 2016 Serpentine Pavilion
Bjarke Ingels



Fashion, 2004
Alexander McQueen



400 West Georgia
Abstract Model
OSO



The Floating Teahouse
Kengo Kuma



16.480,
Omer Arbel



The Teahouse Pavilion
Kengo Kuma



The Butterfly Piano
Venelin Kokalov



Beyond the Sea, Against the Sun
Martin Boyce

LEGACY

The relentless pursuit of perfection. This is the one thing that informs everything we do. Whatever sector we are working in. It is this focus that will create our legacy. Everything we build and do has to be the best expression of us.

It could be about making a city more beautiful. Creating cleaner energy to power that city. Better working practises for those that work for and with us, or giving an artist a new audience, opening people's eyes to something they were previously unaware of. Before you embark on any project, and at every point during it – always ask yourself: will what we leave behind be better than what went before?

Then go make it. And never give up.



INTERIOR ARCHITECTURE

KING Toronto's interiors have been developed in response to the historical nature of the nearby buildings and of the neighbourhood itself. We saw an opportunity to revisit the industrial aesthetic and heritage of historic Toronto and to accentuate it with refined European influences and touches.

Toronto is Canada's largest city – its bustling financial capital and our project – will be an island in this dynamic environment: the new community flowing through the spaces will find calmness and serenity while enjoining the bright, green and permeable outdoor/indoor spaces.

In the same way the architecture gently embraces and enhances the existing buildings, framing them in a cascade of white translucent pixels, the interiors frame the individual experience, with comforting, natural materials and lush vegetation.

From the public areas to the private spaces, we offer a journey through a newly built geological formation: entering through a grand fissure – the atrium; resting/enjoying life in the forest – the courtyards and lobbies; moving through hidden galleries – the corridors; and, finally, reaching the top of the mountain, where a

glistening 'glacier' is waiting to be admired and where each individual home provides a place to settle down and recharge.

The public spaces are conceived as an extension of the residences with lounge areas resembling a living room: welcoming and comfortable, inviting you to stop, wait, read or chat with friends. The selection of furniture and accessories was calculated to bring out the inherent qualities of the living spaces as gathering places.

The refined, industrial aesthetic can be felt in both public and private spaces: while it is a defining element, clearly visible in the former, it is subtler and focused more on the details in the latter.

The materials used in the public areas are mainly aged/blackened metals, corrugated concrete, textured glass in different scales and lush vegetation. Within the residences, service areas such as bathrooms and kitchen are grouped together to form an anchoring block. Clad in a choice of three different materials, this solid, gravitational element forms a counterpoint to the translucency and luminosity of the glass-block façade. The furniture selections for the residences

was made in collaboration with B&B Italia and Maxalto. Through their range of products, we combined timeless Italian design with contemporary innovation. The accessories for homes, as well as furniture for public spaces, are selected predominantly from Scandinavian inspiration, which highlight our design sensibility through the use of light, warm materials and a muted color palette.

When developing interiors, BIG always takes a holistic approach to design, from large scale to small scale, the design intent is carried through to create a complete vision. As a result, we were able to design several custom products, ranging from the suite entry doors, terrazzo floor tiles, wood parquet and kitchens, to a piano for the east atrium.

— *Francesca Portesine* *Director of Interior Design, BIG*



ABOVE:
Kitchen Island, BIG
White Corian

**DESIGN AND
ARCHITECTURE ARE
THE ART AND SCIENCE
OF MAKING SURE THAT
OUR CITIES AND
BUILDINGS FIT WITH
THE WAY WE WANT
TO LIVE.**

– Bjarke Ingels Group

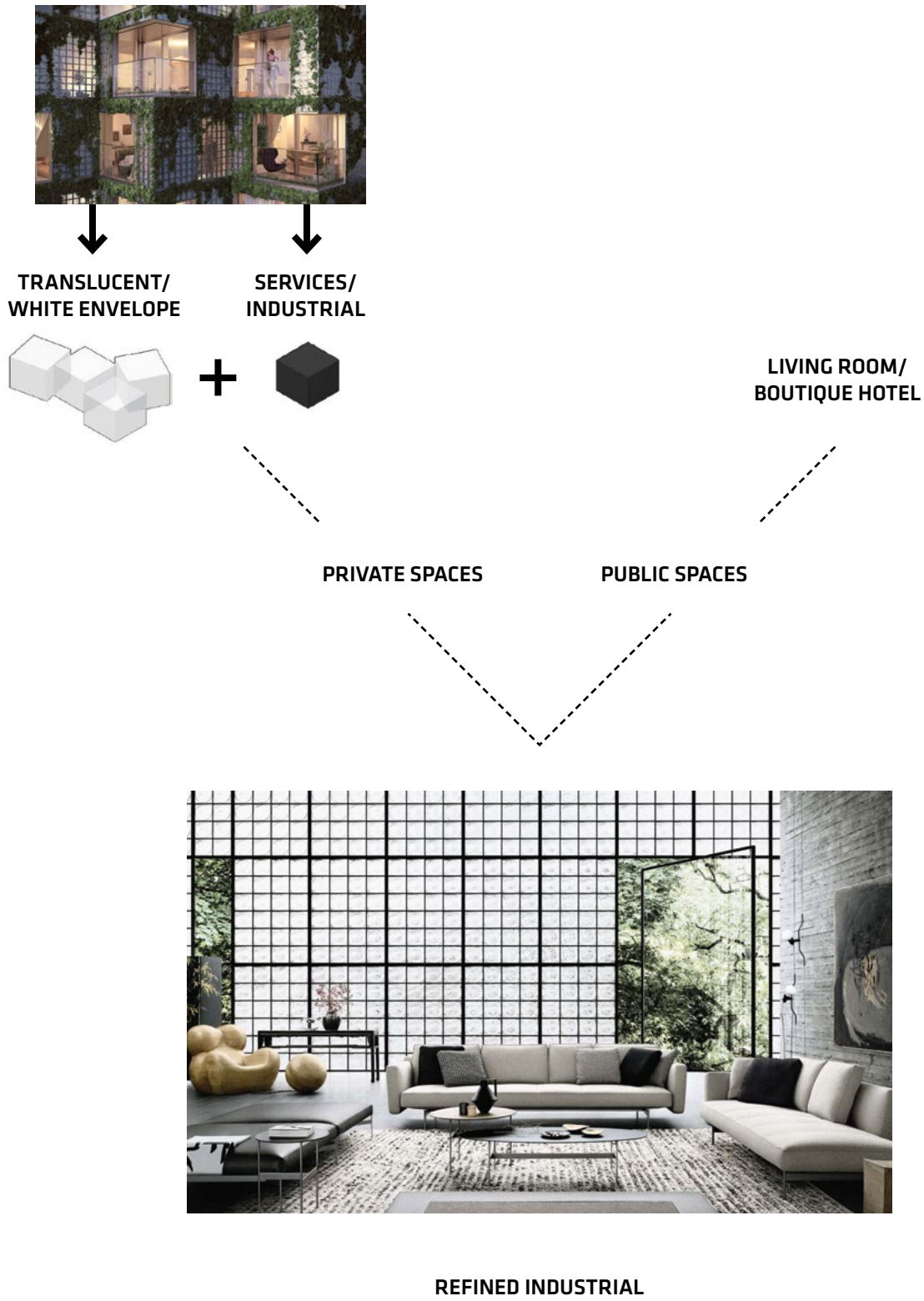


Francesca Portesine, Interior Architect

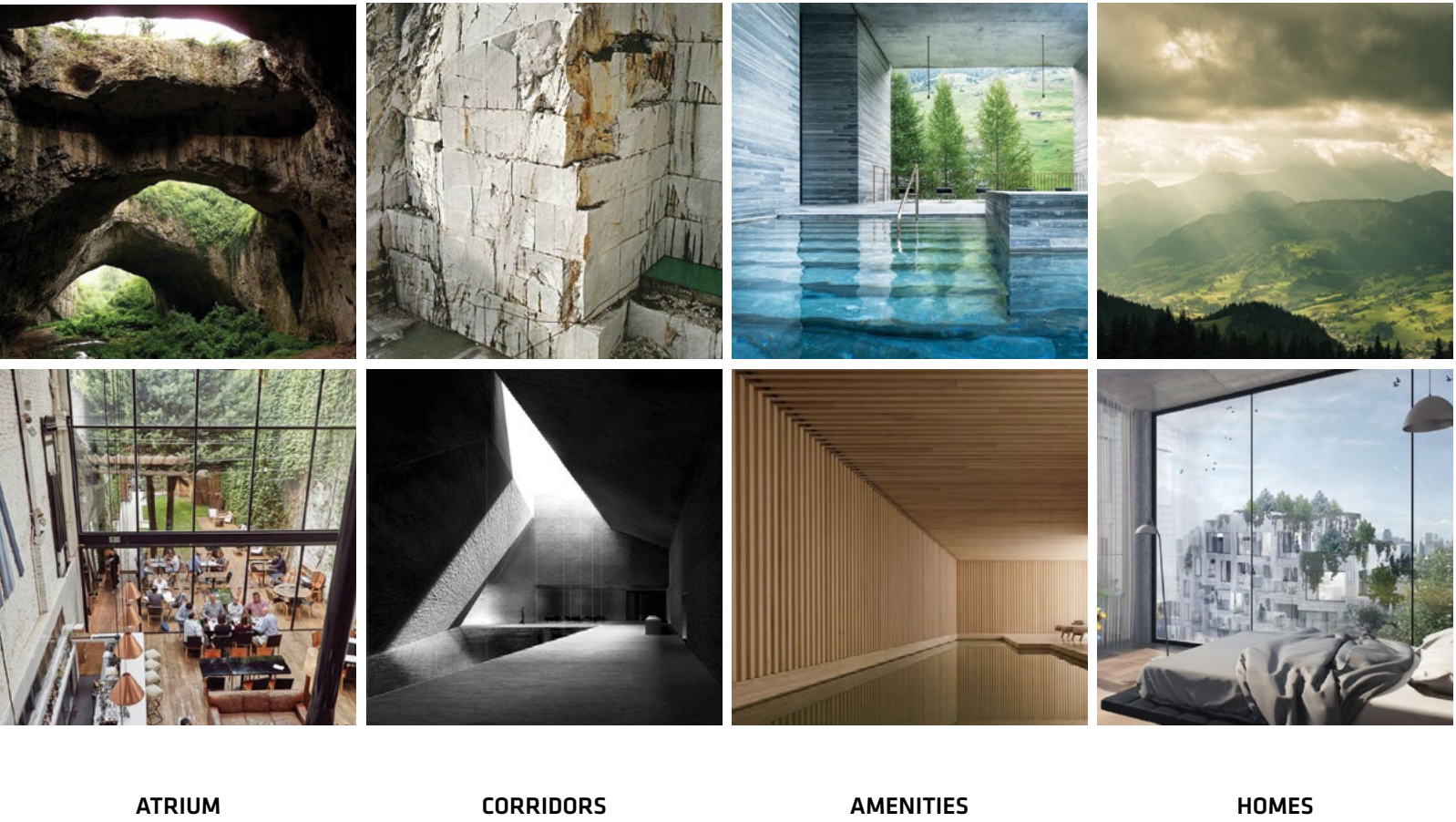
Born in Genova, Italy

Francesca joined BIG in 2013 as a Senior Designer to lead the interior design team for a 600,000 SF residential tower in Vancouver, Canada. Francesca has previously worked at OMA in Rotterdam, Shenzhen, Hong Kong and New York from 2007 to 2013, at Arata Isozaki & Andrea Maffei Associates in 2009, at Metra et Associés (Atelier Jean Nouvel) from 2006 to 2007, at Fuksas Architecture in Paris from 2004 to 2006, and Ibos & Vitart Architects in Paris in 2004. She has worked on different design processes on both large and small scale projects from Eastern Asia to the Middle East, from Europe to North America. She has been Project Leader and Consultant Coordinator for several projects and she has developed a specialty not only in architecture but also in interior design.

CONCEPT



INSPIRATION



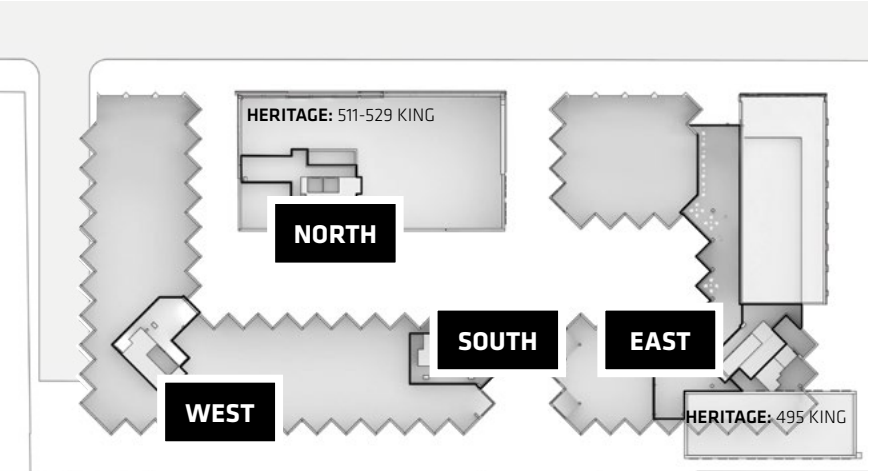
RESIDENTIAL WELCOMING LOBBIES

LOBBY LOCATIONS



ABOVE:
Axonometric diagram showing
the ground floor of KING Toronto

RIGHT:
Lobby locations for each of
the four mountain peaks



INSPIRATION

EAST LOBBY



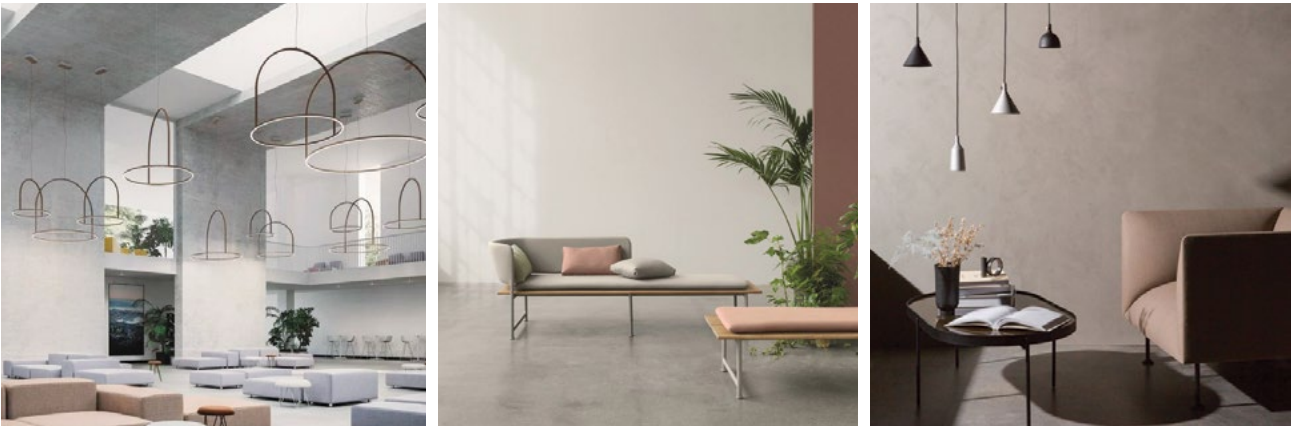
INSPIRATION: REFINED INDUSTRIAL

NORTH LOBBY



INSPIRATION: HERITAGE

WEST LOBBY



INSPIRATION: LIGHT

SOUTH LOBBY



INSPIRATION: GREEN

BELOW:
View inside the atrium looking
towards the East welcoming Lobby



BELOW:
View inside the East atrium looking
outside towards the courtyard



BELOW:
View inside the North welcoming Lobby



BELOW:
View inside the West welcoming Lobby



WEST

OPPOSITE:
View inside the South
welcoming Lobby



AMENITIES

INSPIRATION

Taking inspiration from the building's mountainous peaks and valleys, KING Toronto will feature a mountain inspired spa and Hammam with a spectacular indoor-outdoor pool, hot tub and spa, along with a gym, outdoor terrace and games/party room.



POOL

BELOW:
View of a mountain inspired
pool at KING Toronto



BELOW:
View looking towards King Street
at the indoor/outdoor pool.



02

BELOW:
View of the gym looking out at
the outdoor terrace



GAMES AND
PARTY ROOM

BELOW:
View inside the games and
party room



ELEVATOR LOBBIES, CORRIDORS AND SUITE ENTRY DOORS



The concept for these spaces embodies a similar modern industrial palette as the residences but with an added warmth. The elevator lobbies are clad in a textured wood that emulates the pixelation of the exterior façade juxtaposed by the neutral material palette of the corridors.

LEFT:
View down the residential corridors
looking towards the elevator lobby



SUITE
ENTRY DOOR

The suite entry doors will be clad in a solid wood pixelated pattern inspired from the pixelization fo the building façade.

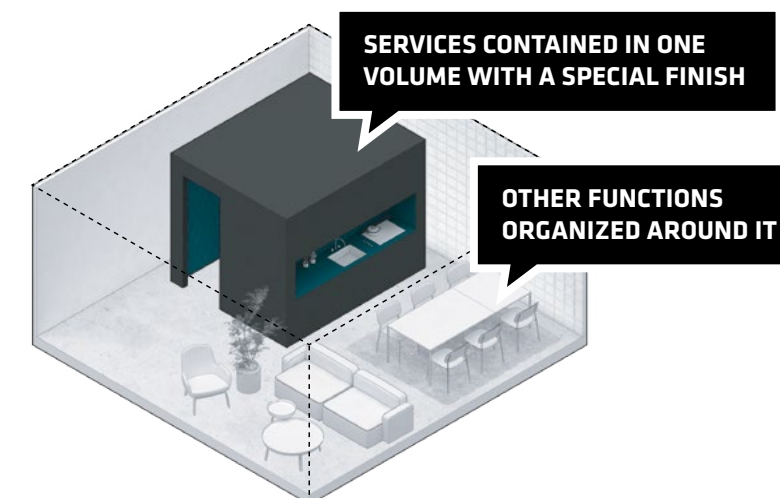
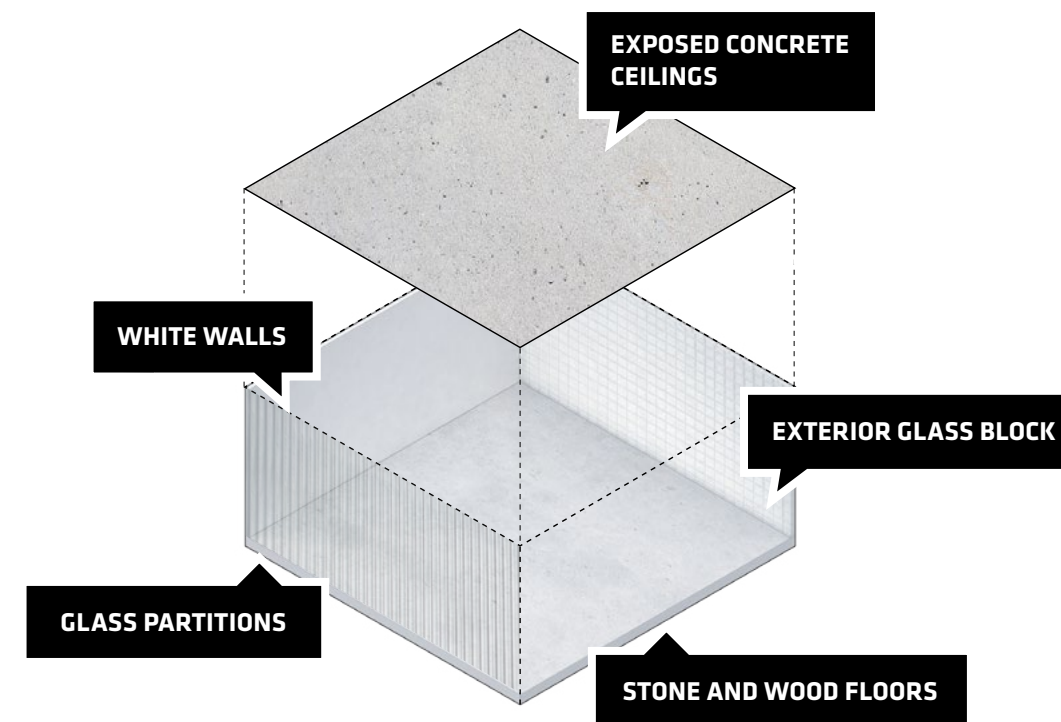
OPPOSITE:
Pixelated wood suite entry door at
KING Toronto



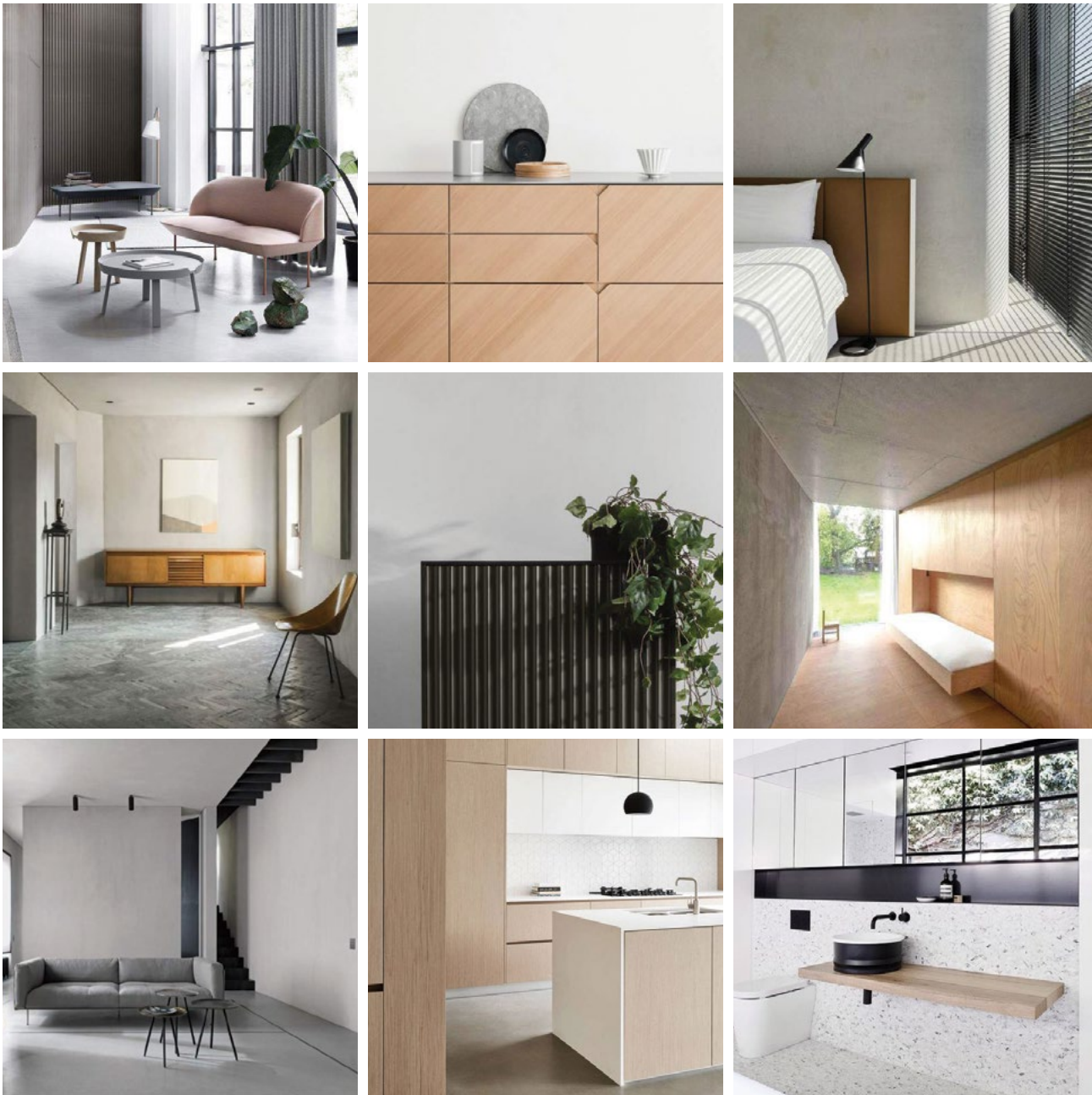
RESIDENTIAL INTERIORS

CONCEPT

The material concept for the residences at KING Toronto features a simple industrial modern palette with the kitchen and bathroom being the dominant and anchoring features within the space.



INSPIRATION



LIGHT



DARK







KITCHEN MATERIALITY

Each kitchen will be clad in a choice of three different materials; white oak wood, matte black laminate and fluted glass. Each of these three options has a different complementing countertop and backsplash materiality of light and dark grey terrazzo and stainless steel. The solid, gravitational element created by the kitchens form a counterpoint to the translucency and luminosity of the glass-block façade.

WOOD

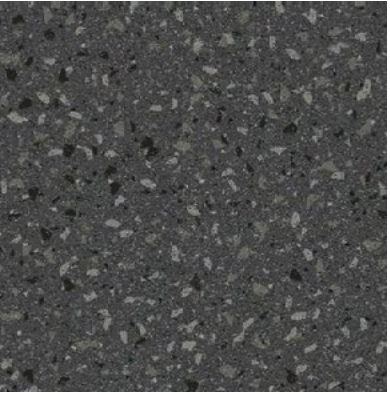


LIGHT GREY
TERRAZZO NICHE
AND COUNTERTOP

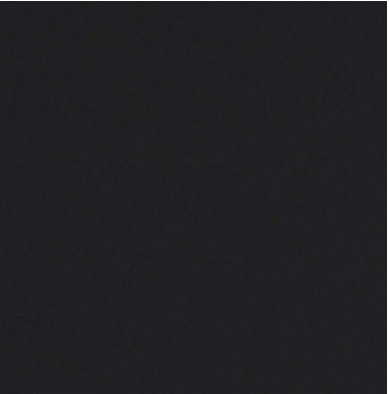


WHITE OAK
WOOD FACE

DARK

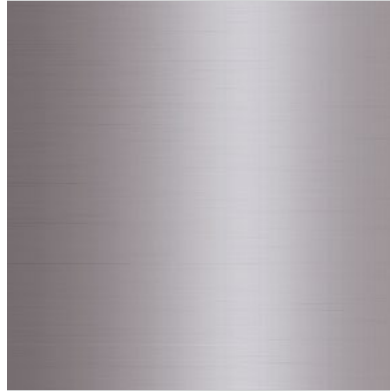


DARK GREY
TERRAZZO NICHE
AND COUNTERTOP

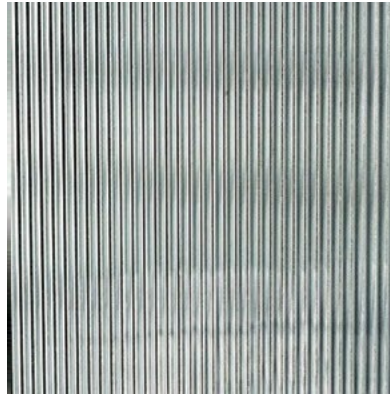


MATTE BLACK FACE

GLASS



STAINLESS STEEL
NICHE AND
COUNTERTOP



FLUTED GLASS
FACE

MIELE PURELINE GENERATION 6000

Westbank deals exclusively with Miele, the world's leading high-end appliance manufacturer, who has curated an appliance lineup in keeping with a building of this quality.

Miele PureLine appliances seamlessly flow into the design of a modern kitchen. Jet black glass combined with a striking stainless steel handle presents a balanced harmony, while bold horizontal lines allow for a continuous design aesthetic. The high proportion of glass creates a serene atmosphere, while floating handles engage onlookers to explore PureLine further. Miele's PureLine Generation 6000 sets a new standard for premium appliances.



ABOVE:
Miele PureLine Generation 6000
Speed Oven, Wall Oven

MIELE: 115 YEARS OF EXCELLENCE



1899
In Herzebrock, Germany, Carl Miele (the technician) and Reinhard Zinkann (the salesman), together with 11 employees, four lathes and a drill, found a company to manufacture milk centrifuges and butter churns.

1900
Just one year after the company’s inception, milk centrifuges and butter churns are joined on the market by the first Miele washing machine, the “Meteor”.

1904
Miele develops its first power-driven washing machine. An “outboard” electric motor supplies the power to move the agitator while a drive belt achieves silent operation, low energy consumption and provides years of service.

1908
Miele moves from Herzebrock to a new factory in Gütersloh. Mr. Miele and Mr. Zinkann are convinced that in order to maintain their quality standards over the long-term, the Miele company must produce all parts and components ‘inhouse’.

1910
Miele develops a mechanical laundry wringer that can be driven by hand or run by an electric motor.

1913
Models in full bloom – Forever More, Forever Better. More than 20 new variants of seven basic models of Miele wooden tub washing machines enter the market, expanding the product range to 50.

1914
An electric plug-in for the washing machine changes everything! A builtin electric motor washing machine is introduced in the legendary Miele washing machine ‘Number 50m’, described at the time as “the role-model in electric washing machines”. All future innovations are based on this design.

1924
Miele introduces a bicycle to the market at a new factory in Bielefeld.

1925
The metal drum replaces the wooden tub in Miele washing machines Miele secures its place as the largest washing machine manufacturer in Germany.

1926
Miele introduces milking machines.

1927
The first Miele vacuum cleaner arrives; first the basic “K” model, soon followed by the ‘Melior’.

1929
Europe’s first electric dishwasher is introduced by Miele.

1932
The first motorized bicycle model is developed and marketed as “a Miele bicycle with balloon tires powered by a Sachs motor”.

1934
Miele introduces a retirement pension fund for its employees, including disability pensions and widow benefits.

1935
The second generation, Carl Miele Jr. and Kurt-Christian Zinkann begin working for Miele, now one of the largest companies in its sector in Germany, with over 2000 employees.

1937
First Miele electric spin dryer with centrifugal force design is developed for private households.

1938
Carl Miele dies on Christmas Eve, six months before his 70th birthday. Director C.H. Walkenhorst: “The name Carl Miele should always be a name that inspires us to continue to work in his spirit. We will honour his name. His work shall continue.”

1939
On July 14, co-founder Reinhard Zinkann dies at the age of 70. Director Walkenhorst: “We will continue to thank him, even beyond the grave, for what he was to us and this firm that he founded, through his work, through his charity, through his goodness and understanding.” Following the deaths of the two founders, their sons Carl Miele Jr. and Kurt Christian Zinkann take the helm.

1944
Air raids destroy production facilities at the Gütersloh plant; Miele’s production program has now been reduced to handcarts and ladders.

1945
War is over and rebuilding of the Gütersloh factory begins. In addition, Miele decides to build workers’ accommodation, and assists employees in the re-building of their own homes.

1947
Due to a shortage of metals, the woodentub washing machine returns. By year’s end, more than 8,000 units have been produced.

1949
Miele’s 50th birthday and Miele rewards all employees with a handsome cash bonus, an increase to the employees’ pension and retirement funds. Miele factories have been re-built and full production begins in earnest with a workforce of 2500.

1952
Miele develops the space-saving rapid washing ‘Machine 75’. The machine automatically fills with cold water through a hose attached to a stopcock – and the water is heated internally.

1953
Miele washing ‘Machine 307’ is introduced with a horizontal-axis drum with an electric boiler featuring gentle treatment of laundry, effective and energy-saving operation and long life reflecting the firm’s high quality standards.

1954
No need to pedal! The Miele motorbike model is the widely known ‘98’ with a Sachs motor. The firm is now the largest manufacturer of washing machines, and the second largest manufacturer of twowheel bicycles and motorbikes.

1956
The Miele automatic ‘Number 702’ washing machine sets the future of clothes washing and care. The Gütersloh factory is expanded to include manufacture of 18,000 individual parts and components in-house for all Miele products.

1958
The introduction of the Miele electric tumble dryer.

1959
Miele automatic washing machines travel around the world – keeping clothing clean on passenger liners, freight ships, training and research ships, and tankers.

1960
Miele makes a historic decision: discontinuing bicycle and motorbike production at the Bielefeld factory, with Miele’s future directed to kitchen and domestic appliances. The fully automatic ‘Number G-10’ dishwasher is introduced.

1965
Miele opens a fifth factory in Lehrte to satisfy the production demands for its products.

1968
Design innovations, advances in electronic control systems and an expanding group of products directed toward the domestic market continue to separate the Miele brand. Miele’s workforce tops 9,000 employees in Germany.

1969
Miele expands its domestic kitchen focus and begins design and production of cooking appliances. The 250,000th dishwasher rolled-off the assembly lines at Bielefeld.

1970
With advances in production automation and electronics and the ‘Immer Besser’ standards, Miele transitions to automation in production, warehousing, and distribution.

1975
Miele introduces a full line of leadingedge built-in appliances including cookers, ovens, dishwashers, refrigerators, and freezers.

1987
The first Miele Museum in Gütersloh, Germany includes one of the legendary Miele K1 cars dating back to 1913, discovered in Norway.

1988
Since 1980, water consumption for Miele dishwashers has decreased by 40 percent and energy consumption has fallen by 30 percent.

1992
Miele increases its investment in employee training to further the ‘Immer Besser’ philosophy.

1998
Miele product line expands: steam ovens, built-in coffee machines, hood fans, gas and electric cooktops, induction cooktops, and warming drawers.

1999
100 years of Miele and ‘Forever Better’! Miele is the ‘most valued brand’ in German and European electronic retail markets. Miele’s international expansion continues with subsidiaries in more than 40 countries.

2000
Miele is awarded the German Marketing Prize – the highest honour for excellence. Water and energy consumption by Miele appliances continues to be reduced – by about 70 percent overall since 1980.

2005
Miele introduces ‘MasterCool’ refrigeration and wine storage, establishing a new standard refrigeration for the domestic market.

2014
Miele introduces ‘Generation 6000’. These technically advanced products set new performance and aesthetic standards for premium appliances worldwide.



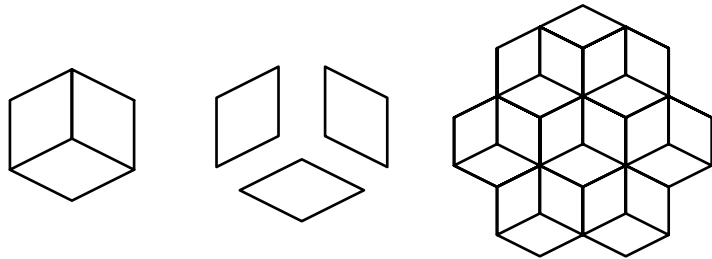




FLOORING

The floors within each home are custom designed by BIG. The main living areas feature a large scale wood parquet, emulating the modularity of the building. The bathroom floors feature a similar concept but the effect of the modularity is achieved through custom coloured terrazzo tiles.

BELOW:
Custom tile study, using the geometry of the pixels.



LIVING SPACES



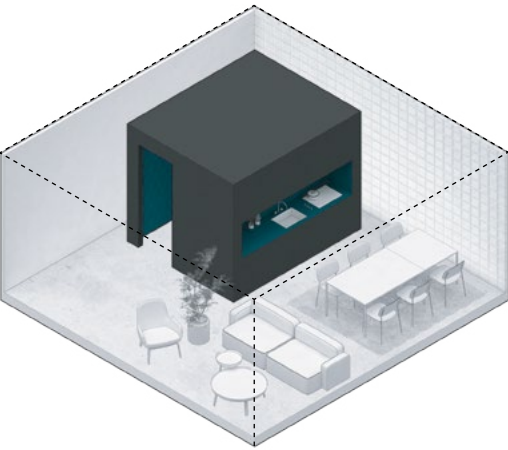
BATHROOMS



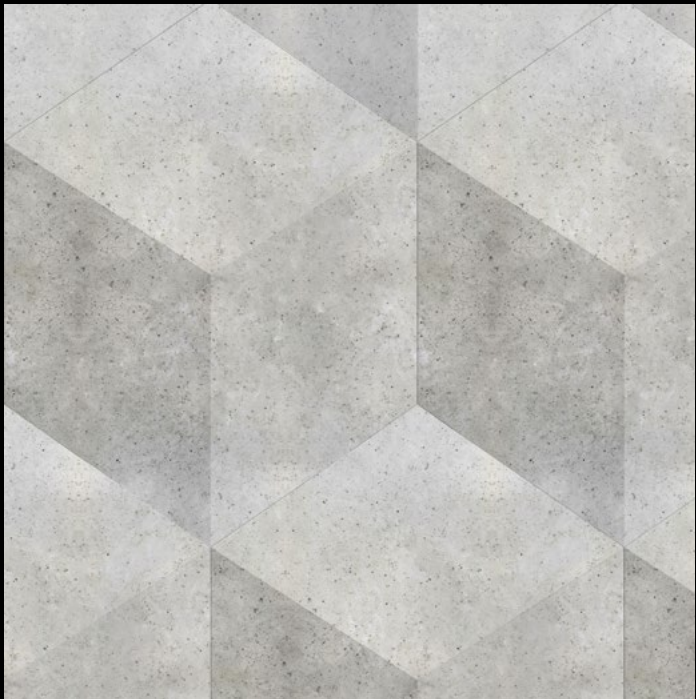
BATHROOM
MATERIALITY

The materiality of the bathrooms is inspired by the concept of the anchoring the service spaces within the homes. The dark cladding of the bathroom walls are complimented with matte black plumbing fixtures and a coloured vanity which plays off the hues of the glass block façade. These elements are contrasted with the lighter tones of the custom terrazzo flooring and custom white frosted pendant light fixtures.

BELOW:
The inspiration for the bathroom design was to create a dark anchoring element within the homes to contrast the glass block façade.



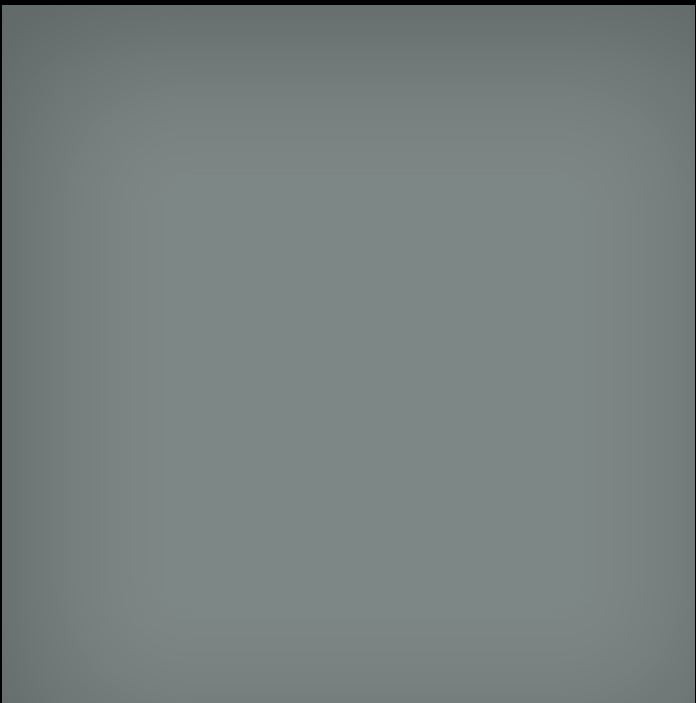
FLOORING



WALLS



VANITY



MIRROR











LIGHTING

The feature lighting in the dining areas and bathrooms have been custom designed by BIG. The dining areas will feature a mouth-blown glass pendant fixture with an ombré mirrored finish. The bathrooms will feature two smaller mouth-blown glass pendant fixtures with an ombré frosted white finish.

RIGHT:
Working images of the custom
designed light fixtures by BIG.





BUILDING SPECIFICATIONS

COURTYARD AND PUBLIC REALM

Applying the “Total Work of Art” philosophy to the courtyard and public realm, KING Toronto will be a diverse and lively zone for living and shopping with new retail, hospitality, workspace and cultural offerings. This year-round destination will feature restaurants and cafes, one-of-a-kind shops and services, street celebrations and craft & farmers markets.

- KING Toronto will offer approximately 180,000 sf of Retail Space
- KING Toronto will offer approximately 60,000 sf of Office / Workspace

PUBLIC ART

Until now, we have never had a canvas quite like KING Toronto, including a grand inner courtyard that will be transformed by one of the most substantial and beautiful public art works yet to grace the streets – or plazas – of Toronto. BIG have suggested the artistic possibilities of suspending mirrored spheres that would take advantage of the infinite changes of light in a partially enclosed space, creating focal points for residents looking in from all angles. As part of the City of Toronto’s Public Art program, we will invite three or four artists to compete in a juried process and we are confident that we will be able to attract world-class talent and that their proposals will fulfill our own ambitions and those of the people of Toronto.

EXTERIOR

- High performance curtainwall system consisting of low-e coated, argon filled vision glazing within aluminium frames, translucent argon filled glass block panels and fully insulated glass block panels
- Floor-to-ceiling exterior glazing and balcony doors for the interior living spaces to extend into the exterior spaces
- Oversized balconies and terraces with white concrete pavers, almost invisible guardrails and glass block parapets to complement the interior material palette, harmonizing the interior and exterior spaces
- A variety of fully-irrigated planters, both small and large, within the terraces that have been specifically designed and curated for their location and altitude within the building
- Cable trellis system with special attachment to the building façade in specific areas dependant on the location and altitude in order to facilitate vine growth on top of the exterior façade

SUSTAINABLE DESIGN AND GREEN INNOVATIONS

- Designed to target LEED Gold certification, the building excels in water conservation, energy reduction and storm water management
- Distinctive façade showcases a high-performance building envelope comprised of insulated and argon filled glass block panels, argon filled translucent glass block panels and high performance vision glazing to improve thermal comfort
- Operable windows in all living areas for human comfort
- Smart-metering system
- Water conservation plumbing fixtures

STRUCTURAL DESIGN

- High strength cast-in-place concrete structure
- Wind design based on specialized wind tunnel studies

MECHANICAL /ELECTRICAL DESIGN

- High efficiency heating & cooling system
- Vertical heat and energy recovery fancoil units
- Air conditioning with smart thermostats and room temperature controls
- “One-Touch” master switch at front entry to conveniently operate lighting for enhanced energy efficiency
- LED lighting throughout

BUILDING SYSTEMS AND SECURITY

- Lobby with 24-hour concierge located within the East Atrium lobby
- Building-wide electronic control system with encrypted fob access
- 24-hour digital video recording surveillance of building entry points
- Video enterphone system for each lobby (North, East, South, West)
- Restricted floor access
- Standby generator set for base building backup
- Advanced biometric security systems

LOBBIES AND CORRIDORS

- Unique lobby designs for each of the four mountain peaks (North, East, South, West)
- Secure fob access to each of the four lobbies
- 24-hour concierge located in the East Atrium with a custom BIG designed sculptural concierge desk
- BIG designed custom Italian crafted Fazioli piano within the East Atrium
- Diffuser system dispenses a custom fragrance throughout each of the lobbies and corridors
- BIG designed elevator lobbies and corridors with pixelated light-wood panels at the elevator lobbies and suite entry doors

ELEVATORS

- Two over-height, over-sized 3,500 lb high-performance passenger elevators per lobby/ mountain (8 passenger elevators total)
- Interior cab design by BIG
- Centre-opening doors
- Cellular repeaters provide mobile phone access while in elevators

PARKADE

- Secured gated parkade entrances
- Two dedicated bike elevators to secured bicycle storage rooms
- Select two-car private garages with storage
- Approximately 5' x 3' storage units
- Fob access through secured elevator vestibules
- Cellular repeaters provide mobile phone access throughout the parkade
- Future-proofed parkade allowing for 100% of the parking stalls to have EV charging stations installed

MOUNTAIN SPA, POOL AND HOT TUB

- Indoor, heated 20-metre length lap pool
- Intersecting indoor/outdoor pool overlooking King Street W
- Indoor hot-tub
- Mountain inspired pool deck and lounging areas designed by BIG
- Change rooms with porcelain-tile clad walls and flooring, locker, shower and steam room/ sauna facilities
- Luxuriously designed spa facilities adjacent with direct connection to the pool deck
- Access to an outdoor furnished rooftop terrace

FITNESS CENTRE

- Fully-equipped fitness centre and yoga studio
- Resilient flooring, mirrored walls and built in millwork
- Access to an outdoor furnished rooftop terrace

GAMES AND PARTY LOUNGE

- Custom terrazzo tile flooring throughout
- Large chef’s kitchen with professional-grade appliances
- Contemporary lounge and dining furniture
- Billiards table
- Access to an outdoor furnished rooftop terrace

All specifications and materials are subject to change and/ or variation without notice.

INTERIOR HOME SPECIFICATIONS

INTERIORS

Designed by Bjarke Ingels Group (BIG), KING Toronto’s interiors are conceived in direct relation to the overall architecture and materiality of the building itself. The combination of neutral and bold, the material concept for the residences features a refined, modern industrial palette with the kitchen and bathroom being the dominant and anchoring features within the space.

INTERIOR HOME DESIGN FEATURES

- Interiors custom designed by Bjarke Ingels Group (BIG)
- BIG designed pixelated light-wood suite entry doors with black steel hardware.
- Integrated suite numbering into the suite entry doors with black steel inserts
- Custom pattern, large format engineered hardwood flooring in a custom hexagonal pattern throughout all living, dining and bedroom spaces
- Custom pattern, tri-toned grey terrazzo flooring within the bathrooms
- Floor-to-ceiling sheer drapery along all exterior faces (with rough-in for motorization) for all homes. Two and three-bedroom homes will be equipped with motorized drapery along all exterior faces.
- Blackout curtains provide additional privacy layer for bedrooms (with rough-in for motorization) in all homes. Two and three-bedroom homes will be equipped with motorized drapery along all exterior faces.
- Overheight 8’11” exposed concrete ceilings within homes (7’8” in areas with dropped ceilings) – ceiling heights are approximate
- Exposed mechanical ductwork in areas with exposed concrete ceilings
- Three custom-designed kitchen finishes to choose from; white oak wood veneer, soft-touch matte black laminate and mirrored fluted-glass.

- Generous balconies and terraces double as outdoor living rooms
- White concrete tile balcony and terrace pavers with custom accessories, such as planters or glass cloches, depending on the altitude and exposure of the balcony/terrace

TECHNOLOGY

- KING Toronto will offer its residents a complimentary consultation to select a state-of-the-art technology package from the project’s technology consultant one year prior to closing*
- *Packages will be at an additional cost
- One-year free TV, phone and internet services
- “One-Touch” master switch at front entry to conveniently turn off all lighting for energy conservation
- Electric rough-in for all exterior drapery

KITCHEN DESIGN FEATURES

- Custom designed, Italian-crafted kitchen cabinetry with full depth upper cabinets and three different finish selections:
 - 1 White oak wood veneer cabinets with a light grey terrazzo stone countertop and backsplash
 - 2 Soft-touch matte black laminate with a dark grey terrazzo stone countertop and backsplash
 - 3 Mirrored fluted-glass with a stainless-steel countertop and backsplash (upgrade option)
- Integrated and black back-painted glass appliances with stainless steel accents
- Soft-closing precision cabinet drawers and doors
- Faucets finished as accent pieces in matte black
- Custom designed waterfall-edge kitchen islands to match the kitchen finishes (as applicable/as per plans)

STUDIO AND ONE BEDROOM HOMES APPLIANCE PACKAGE

- 24” Miele fully integrated, bottom mount fridge/freezer
- 24” Miele 4-burner gas cooktop
- 24” Miele fully integrated hood fan with energy-efficient LED lighting
- 24” Miele fully integrated dishwasher with cutlery tray and hidden control panel
- 24” Miele PureLine Black back painted glass wall oven
- 24” Miele Black back painted glass microwave
- 24” Blomberg stacking front load washer and vented dryer

TWO BEDROOM HOMES APPLIANCE PACKAGE

- 30” Miele fully integrated, bottom mount fridge/freezer
- 30” Miele 4-burner gas cooktop
- 36” Miele fully integrated hood fan with energy-efficient LED lighting
- 24” Miele fully integrated dishwasher with cutlery tray and hidden control panel
- 30” Miele PureLine Black back painted glass wall oven
- 24” Miele PureLine Black back painted glass microwave/speedoven
- 24” Miele undercounter wine cooler (as applicable/as per plan)
- 27” Whirlpool front load washer and vented dryer with steam function

THREE BEDROOM HOMES APPLIANCE PACKAGE

- 30” Miele fully integrated, bottom mount fridge/freezer
- 30” Miele 4-burner gas cooktop
- 36” Miele fully integrated hood fan with energy-efficient LED lighting
- 24” Miele fully integrated dishwasher with cutlery tray and hidden control panel

- 30” Miele PureLine Black back painted glass wall oven
- 24” Miele PureLine Black back painted glass microwave/speedoven
- 24” Marvel undercounter wine cooler (as applicable/as per plan)
- 27” Whirlpool front load washer and vented dryer with steam function

PENTHOUSE APPLIANCE PACKAGE

- 30” Miele fully integrated, bottom mount fridge/freezer
- 30” Miele 5-burner gas cooktop
- 36” Miele fully integrated hood fan with energy-efficient LED lighting
- 24” Miele fully integrated dishwasher with cutlery tray and hidden control panel
- 30” Miele PureLine Black back painted glass walloven
- 24” Miele PureLine Black back painted glass microwave/speedoven
- 24” Miele built-in and plumbed coffee maker
- 24” Miele full height wine cooler
- 27” Whirlpool front load washer and vented dryer with steam function

MASTER BATH DESIGN FEATURES

- Custom pattern, tri-toned grey terrazzo floors
- Matte finish dark grey porcelain tile walls
- Custom designed freestanding vanity with integrated teal-coloured sink and built-in storage
- Contemporary fixtures and fittings in matte black finish
- Freestanding toilet with hidden tank
- Built-in bathtub with tile decking (as applicable/as per plans)
- Rain showerhead with additional hand shower
- Walk-in shower with linear trench drain (as applicable/as per plan)
- Freestanding bathtub and matte black tub

- filler (as applicable/as per plan)
- Custom designed pill-shaped medicine cabinet with storage shelves and integrated LED lighting
- In-floor heating

2ND BATHROOM / POWDER ROOM DESIGN FEATURES

- Custom pattern, tri-toned grey terrazzo floors
- Matte finish dark grey porcelain tile wet walls
- Custom designed freestanding vanity with integrated teal-coloured sink and built-in storage
- Contemporary fixtures and fittings in matte black finish
- Freestanding toilet with hidden tank
- Built-in bathtub with tile decking
- Rain showerhead with additional hand shower
- Walk-in shower with linear trench drain (as applicable/as per plans)
- In-floor heating in all Penthouse home bathrooms

FURNISHINGS

B&B Italia, the world’s leading contemporary furniture company, has collaborated with BIG to carefully curate a collection of furniture packages that complement the modern industrial design aesthetic of the interior architecture. Studio and select one-bedroom units will come furnished by B&B Italia and residents of one, two and three-bedroom homes will have the option of purchasing furniture packages with their home at KING Toronto.

All specifications and materials are subject to change and/ or variation without notice.

KITCHEN
APPLIANCES



**Miele Refrigerator
With Bottom Freezer Door**
24" | Studio and 1 Bedroom
30" | 2, 3 Bedrooms and PH



Miele Gas Cooktop
24"; 4 Burners | Studio and 1 Bedrooms
30"; 4 Burners | 2, 3 Bedrooms
30"; 5 Burners | PH



Miele Integrated Hoodfan
24" | Studio and 1 Bedrooms
36" | 2, 3 Bedrooms and PH



Miele Convection Oven
24" | Studio and 1 Bedrooms
30" | 2, 3 Bedrooms and PH



Miele Built-In Microwave Oven
Studio and 1 Bedroom



**Miele Fully-Integrated 24" Dishwasher
With Upper Cutlery Tray And No Visible
Controls**



**Matte Black Kitchen Faucet
With Pull-Down Spray**



**Miele 30" SpeedOven
combination oven/microwave**
2, 3 Bedrooms and PH



Miele Built-In Coffeemaker
PH



**Marvel Undercounter Wine Cooler With
Integrated Panel**
2, 3 Bedrooms



Miele Tall Integrated Wine Storage
PH

BATHROOM
FIXTURES

WASHER/
DRYER



Freestanding Bathtub (as per plans) in
Matte White Finish

Wall Mounted Sink and Bath Faucet in
Matte Black Finish

Rain Showerhead in Matte Black Finish

Freestanding Tub Faucet in
Matte Black Finish

Custom Vanity with
Integrated Storage

Hand-shower in Matte Black Finish

Integrated Tub

Floor Mounted Toilet with In-Wall Tank

Control



Blomberg 24" Front Load Washer
Studio and 1 Bedroom

Whirlpool 27" Front Load Washer
2, 3 Bedrooms and PH

Blomberg 24" Front Load Dryer
Studio and 1 Bedroom

Whirlpool 27" Front Load Dryer
2, 3 Bedrooms and PH

FURNISHINGS

B&B ITALIA

B&B Italia is a leading group in the high-end design furnishing sector. Founded in 1966 by Piero Ambrogio Busnelli, B&B Italia has always stood out for its strong orientation towards research and innovation, which has allowed it to give life, in collaboration with the masters of design, to iconic and timeless products.

Headquartered in Novedrate (Como) – in a building designed by Renzo Piano and Richard Rogers in 1971 – the company has built its success on the ability to represent contemporary culture, to sense and anticipate trends, to respond to changes in taste and living needs. B&B Italia's call to research

and innovation is mirrored in its collections of furnishings that represent an essential segment of Italian design history, based on a unique union of creativity, innovation and industrial know-how, and focused on producing timeless products that last a lifetime. The heart of the company is its internal R&D Centre, which is a real forge of cultural meetings and experiences, strongly fuelled by partnerships with international designers such as Antonio Citterio, Piero Lissoni, Mario Bellini, Gaetano Pesce, Naoto Fukasawa, Patricia Urquiola, Barber & Osgerby, Jeffrey Bennett, and many others.



RIGHT:
B&B Italia's headquarters in
Novedrate, Italy.

WESTBANK X B&B ITALIA

Westbank has partnered with B&B Italia, the leading Italian company in the international world of designer furniture, to curate a collection of beautiful, well-crafted furnishings for each home.

B&B Italia’s products have contributed to the history of Italian design. A history based on technology, creativity, and that inherent style that has made Italy famous throughout the world, establishing the “Made in Italy” brand that has been exported to international markets. The B&B Italia furniture collection has its roots in its ability to reflect contemporary culture and the capacity to respond quickly to the ever changing lifestyles, habits and requirements. Modern furniture elements that are distinctive and characterized by exceptional quality and timeless elegance.

The result of the unique union between creativity, innovation and industrial know-how. Lounge chairs, sofas and standing lights will draw on the rich tradition of Italian furniture design, including the essence of Milan’s classic modernist design era from 1960-1980, but also contemporary models, supplied and manufactured by B&B Italia.

To provide the continuity of design language and quality, BIG has also collaborated heavily with a custom kitchen manufacturer from Italy, procured through B&B Italia, to achieve a design that reflects the beautiful aesthetic of the homes and to realize their design intentions and detailing criteria.



INSPIRATION



STUDIO & ONE BEDROOM
HOMES (UNDER 600 FT²)



STUDIO & ONE BEDROOM
HOMES (UNDER 600 FT²)

LIVING / DINING

HARBOR SOFA



HARBOR ARMCHAIR AND STOOL



BUTTON TABLE



PATHOS TABLE



CHARLOTTE DINING CHAIR



EUCALIPTO MEDIA UNIT



BEDROOM

SIENA BED



ATELIER/STUDY

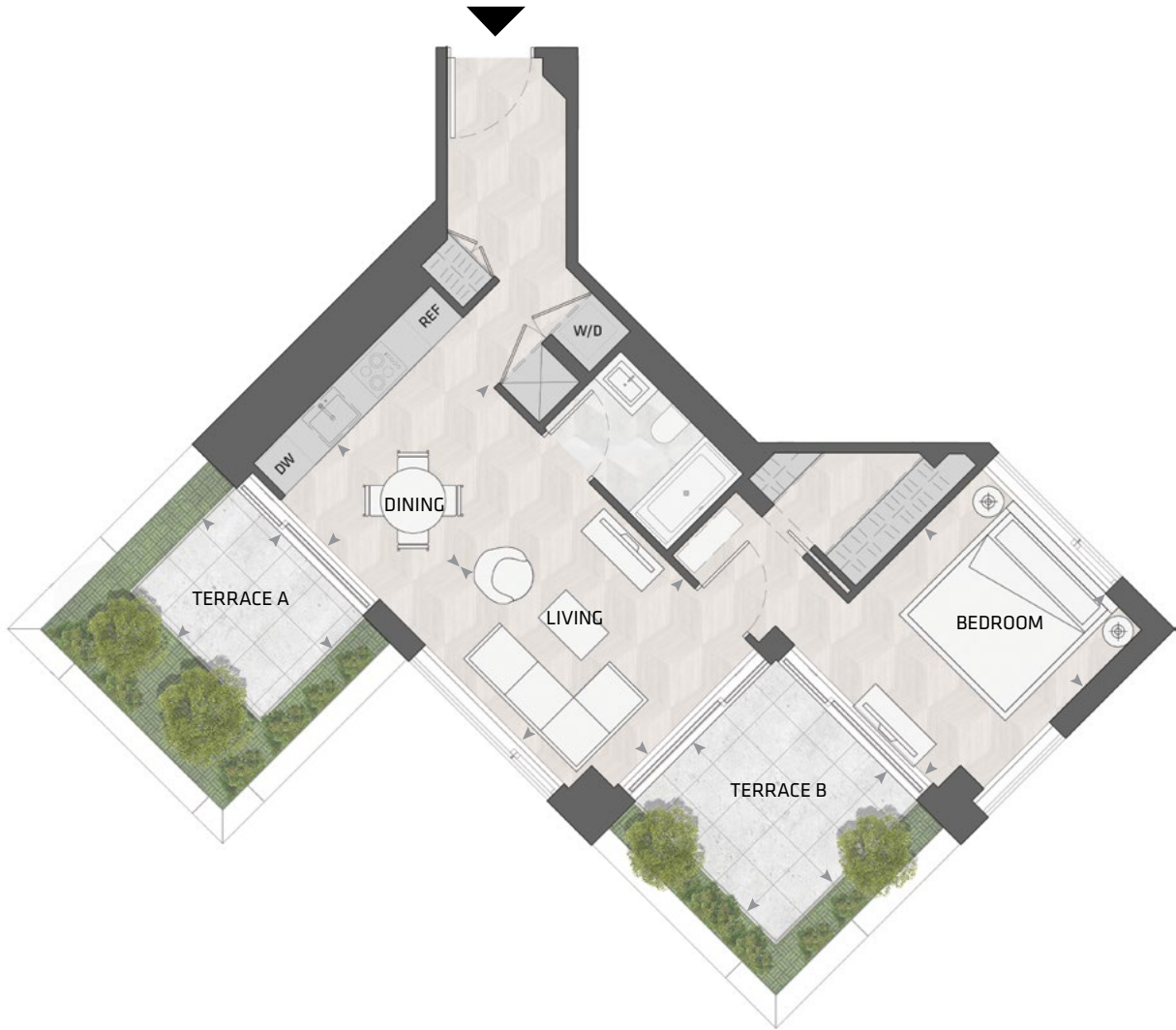
CHARLOTTE CHAIR



MAX DESK



ONE BEDROOM HOMES
(OVER 600 FT²)



ONE BEDROOM HOMES
(OVER 600 FT²)

LIVING / DINING

TUFTY TOO SOFA



DO MARU SIDE CHAIR



MARU TABLE



EUCALIPTO MEDIA UNIT



PATHOS TABLE (ROUND)



MIRTO DINING TABLE (RECTANGULAR)



CHARLOTTE DINING CHAIR



BEDROOM



ATELIER/STUDY

CHARLOTTE CHAIR

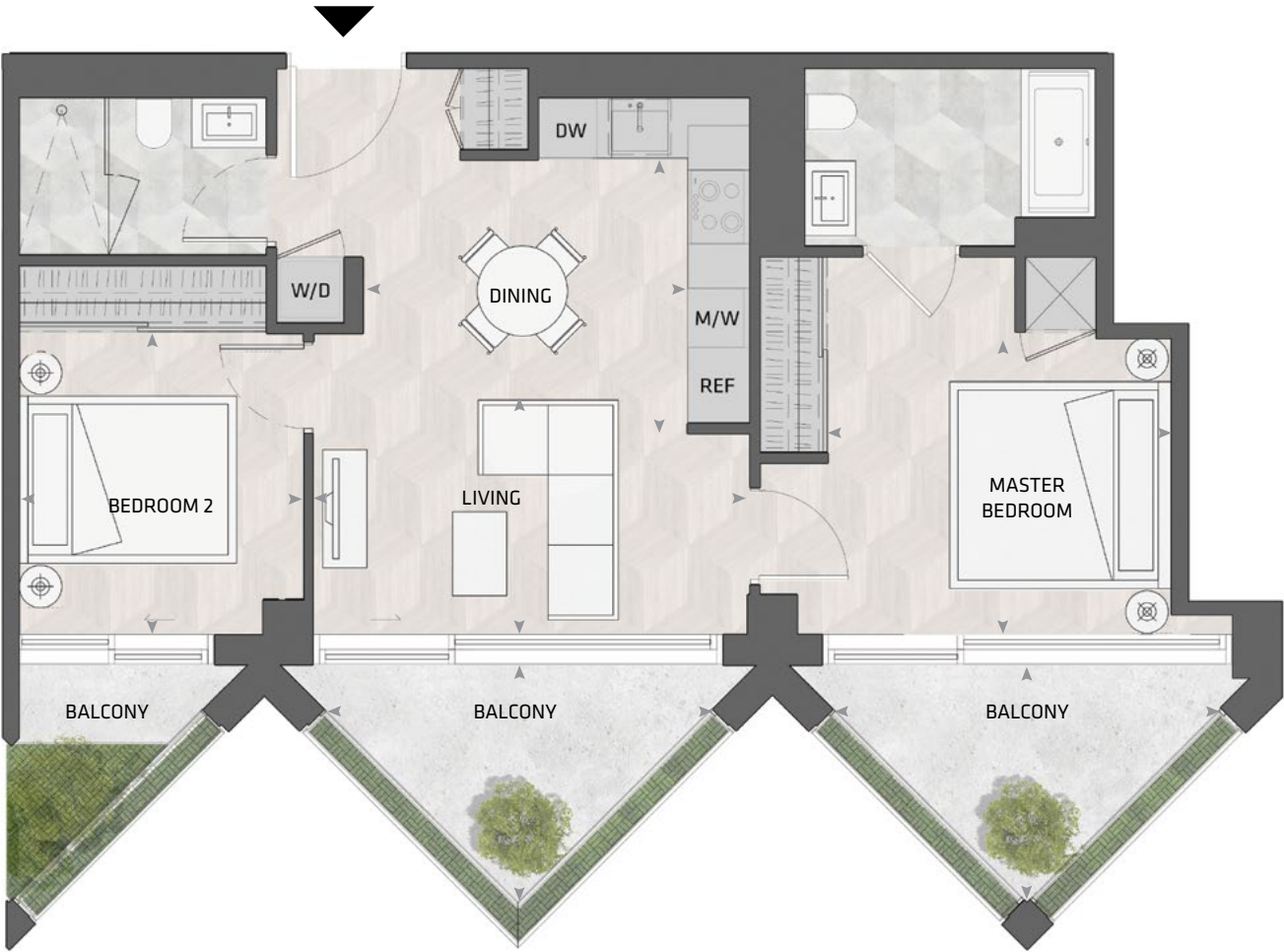


MAX DESK





TWO BEDROOM HOMES



TWO BEDROOM HOMES

LIVING / DINING

TUFTY TOO SOFA



TOBI IASHI COFFEE TABLE



THEO SIDE CHAIR



EUCALIPTO MEDIA UNIT



PATHOS TABLE (ROUND)



BEDROOMS

MASTER
TUFTY BED



SECOND BEDROOM
SIENA BED



ATELIER/STUDY

CHARLOTTE CHAIR



MAX DESK



CHARLOTTE DINING CHAIR



PROGETTO DINING TABLE





THREE BEDROOM AND
PENTHOUSE HOMES



THREE BEDROOM AND
PENTHOUSE HOMES

LIVING / DINING

ANDI SOFA



LE FORMICHE COFFEE TABLE



THEO SIDE CHAIR



EUCALIPTO MEDIA UNIT



CHARLOTTE DINING CHAIR



MIRTO DINING TABLE



BEDROOMS

MASTER
TUFTY BED



SECOND BEDROOM
SIENA BED



ATELIER/STUDY

CHARLOTTE CHAIR



MAX DESK





KING

HOME 501 5



1BD.02

1 Bedroom + Atelier
1 Bathroom

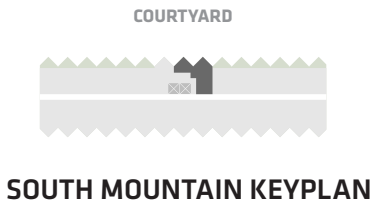
Total Living:
638 ft²

Interior Living:
638 ft²

Exterior Living:
N/A



LIVING	10' 2" X 8' 8"
DINING	7' 3" X 9' 6"
BEDROOM	14' 5" X 12' 3"
ATELIER	5' 5" X 5' 5"



All dimensions and specifications are approximate. Certain plans are reverse or mirror image. Balcony square footages are estimated and may vary from that stated. Please see Sales Representative for details. Furniture not included. Refer to key plan for unit location and orientation. E. & O.E.

KING

HOME 502 5



1BD.06B

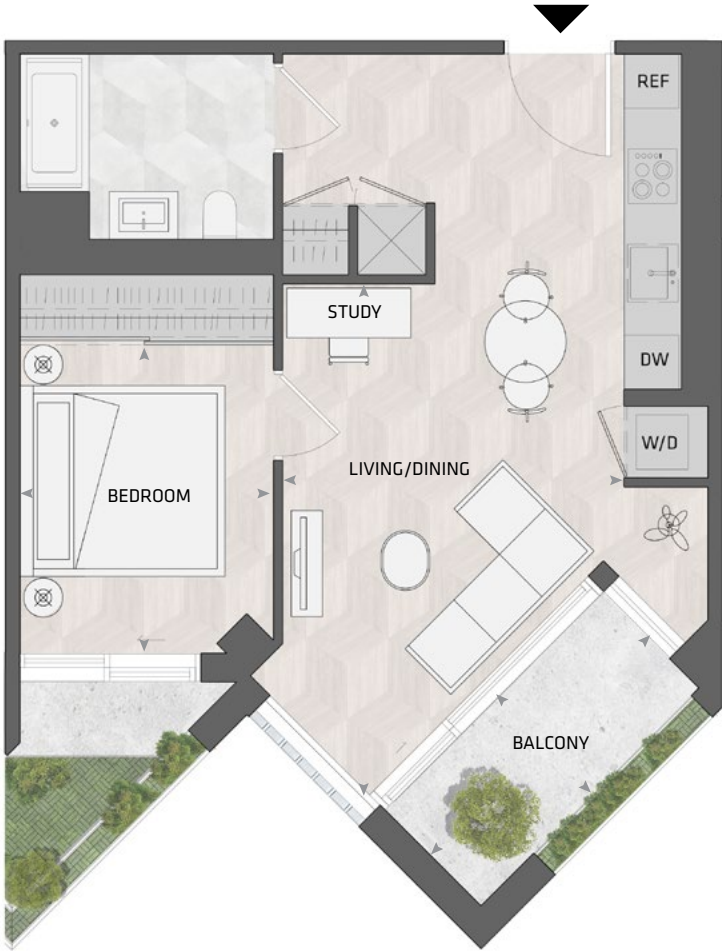
1 Bedroom + Study
1 Bathroom

Total Living:
725 ft²

Interior Living:
609 ft²

Exterior Living:
116 ft²

LIVING/ DINING	12' 4" X 18' 7"
BEDROOM	9' 2" X 11' 7"
BALCONY	11' 0" X 4' 11"



COURTYARD



SOUTH MOUNTAIN KEYPLAN

All dimensions and specifications are approximate. Certain plans are reverse or mirror image. Balcony square footages are estimated and may vary from that stated. Please see Sales Representative for details. Furniture not included. Refer to key plan for unit location and orientation. E. & O.E.

KING

HOME 503 5



1BD.06

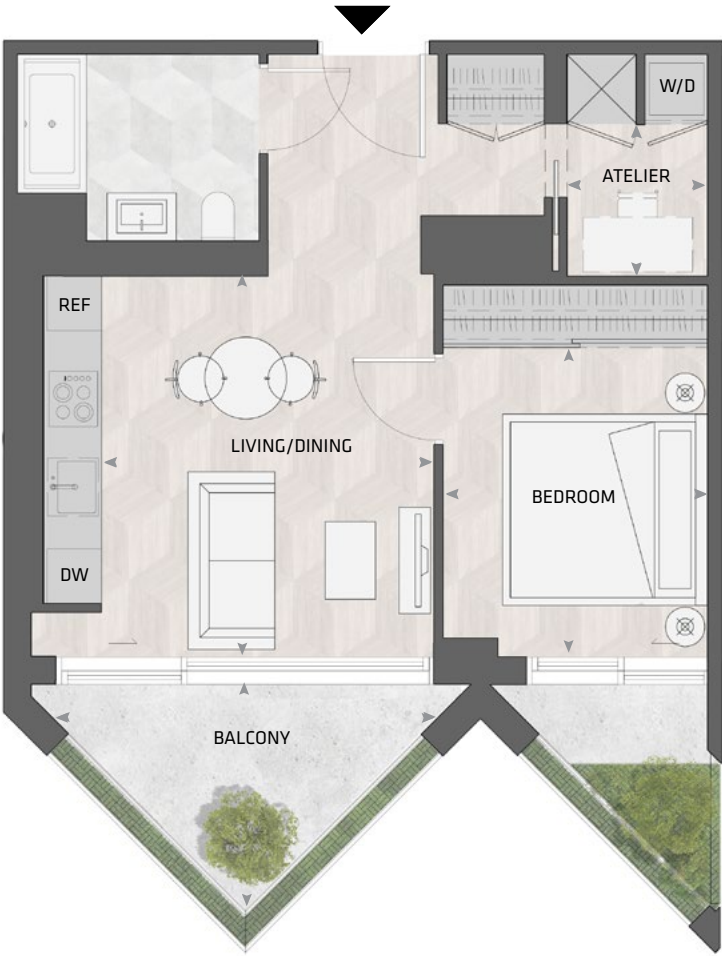
1 Bedroom + Atelier
1 Bathroom

Total Living:
725 ft²

Interior Living:
593 ft²

Exterior Living:
132 ft²

LIVING/ DINING	13' 11" X 12' 0"
BEDROOM	11' 4" X 9' 6"
ATELIER	5' 6" X 5' 1"
BALCONY	13' X 7' 9"



COURTYARD



SOUTH MOUNTAIN KEYPLAN

All dimensions and specifications are approximate. Certain plans are reverse or mirror image. Balcony square footages are estimated and may vary from that stated. Please see Sales Representative for details. Furniture not included. Refer to key plan for unit location and orientation. E. & O.E.

KING

HOME SOS 5



1BD.05A

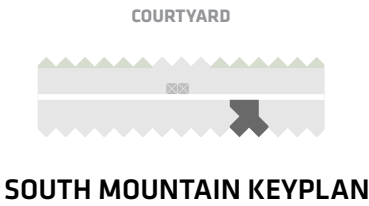
1 Bedroom + Atelier
1 Bathroom

Total Living:
724 ft²

Interior Living:
652 ft²

Exterior Living:
72 ft²

LIVING	11' 2" x 11' 8"
DINING	10' 1" x 8' 9"
BEDROOM	10' 6" x 11' 2"
ATELIER	10' 1" x 6' 8"
BALCONY	11' 0" x 4' 11"



All dimensions and specifications are approximate. Certain plans are reverse or mirror image. Balcony square footages are estimated and may vary from that stated. Please see Sales Representative for details. Furniture not included. Refer to key plan for unit location and orientation. E. & O.E.

KING

HOME 506 5



1BD.01F

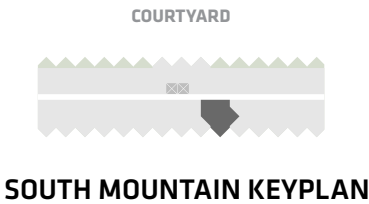
1 Bedroom + Atelier
1 Bathroom

Total Living:
724 ft²

Interior Living:
652 ft²

Exterior Living:
72 ft²

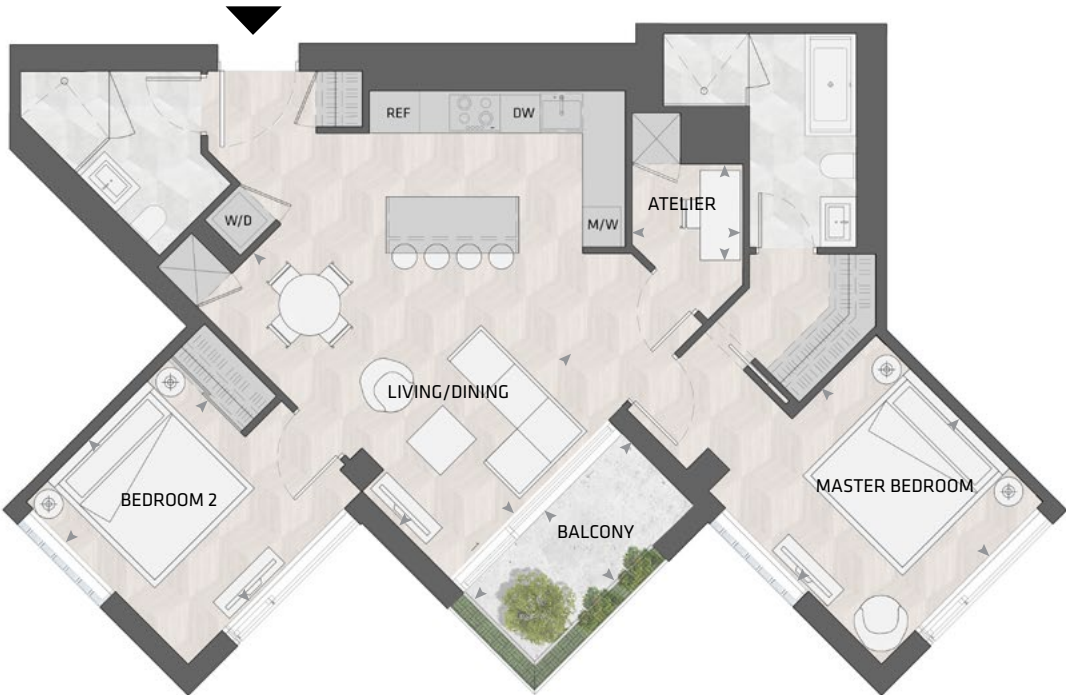
LIVING	10' 11" X 10' 3"
DINING	10' 6" X 8' 6"
BEDROOM	10' 2" X 9' 10"
ATELIER	7' 1" X 4' 8"
BALCONY	11' 0" X 4' 11"



All dimensions and specifications are approximate. Certain plans are reverse or mirror image. Balcony square footages are estimated and may vary from that stated. Please see Sales Representative for details. Furniture not included. Refer to key plan for unit location and orientation. E. & O.E.

KING

HOME 507 5



2BD.67B

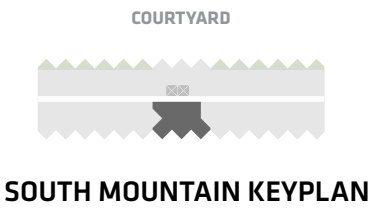
2 Bedroom + Atelier
2 Bathroom

Total Living:
1185 ft²

Interior Living:
1113 ft²

Exterior Living:
72 ft²

LIVING/ DINING	12' 0" X 18' 3"
MASTER BD	11' 2" x 11' 7"
BEDROOM 2	9' 10" x 11' 2"
ATELIER	5' 5" x 4' 8"
BALCONY	11' 0" x 4' 11"



All dimensions and specifications are approximate. Certain plans are reverse or mirror image. Balcony square footages are estimated and may vary from that stated. Please see Sales Representative for details. Furniture not included. Refer to key plan for unit location and orientation. E. & O.E.

KING

HOME 508 5



1BD.01F

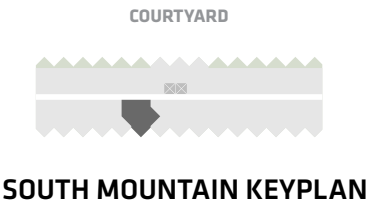
1 Bedroom + Atelier
1 Bathroom

Total Living:
724 ft²

Interior Living:
652 ft²

Exterior Living:
72 ft²

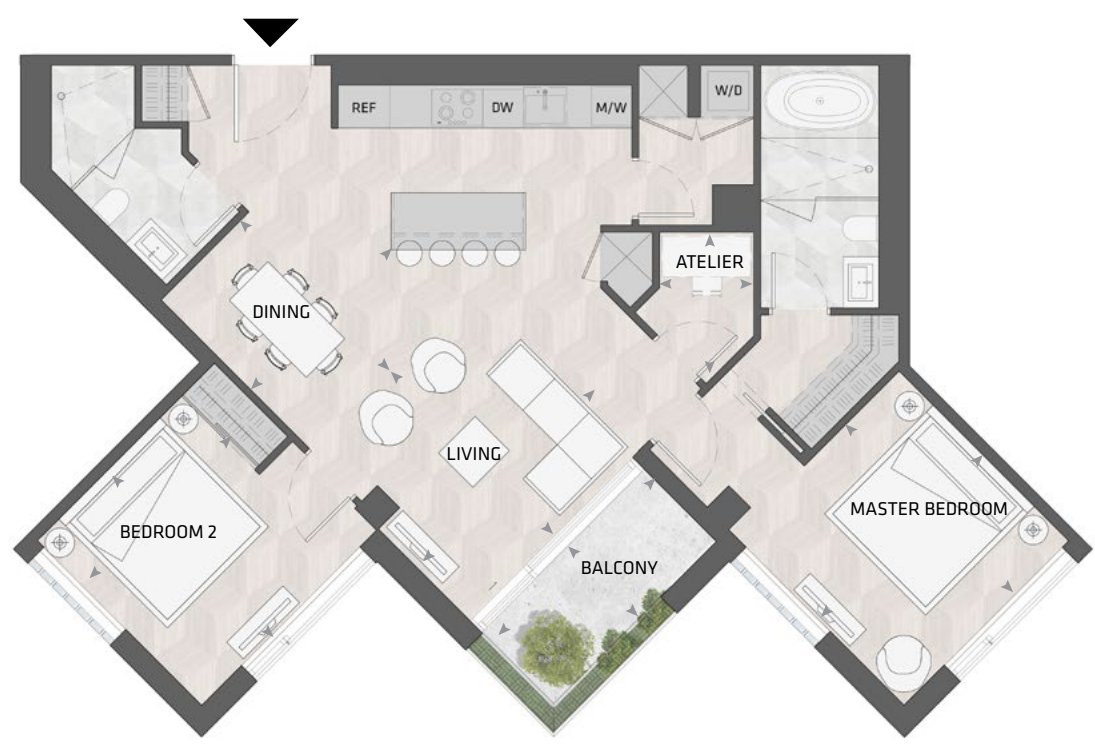
LIVING	10' 11" X 10' 3"
DINING	10' 6" X 8' 6"
BEDROOM	10' 2" X 9' 10"
ATELIER	7' 1" X 4' 8"
BALCONY	11' 0" X 4' 11"



All dimensions and specifications are approximate. Certain plans are reverse or mirror image. Balcony square footages are estimated and may vary from that stated. Please see Sales Representative for details. Furniture not included. Refer to key plan for unit location and orientation. E. & O.E.

KING

HOME 509 5



2BD.67A

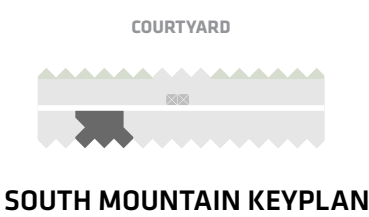
2 Bedroom + Atelier
2 Bathroom

Total Living:
1211 ft²

Interior Living:
1139 ft²

Exterior Living:
72 ft²

LIVING	12' 3" X 11' 7"
DINING	9' 7" X 9' 8"
MASTER BD	11' 0" x 11' 4"
BEDROOM 2	9' 8" x 11' 1"
ATELIER	4' 7" x 5' 0"
BALCONY	11' 0" x 4' 11"



All dimensions and specifications are approximate. Certain plans are reverse or mirror image. Balcony square footages are estimated and may vary from that stated. Please see Sales Representative for details. Furniture not included. Refer to key plan for unit location and orientation. E. & O.E.

KING

HOME 510 5



1BD.06

1 Bedroom + Atelier
1 Bathroom

Total Living:
725 ft²

Interior Living:
593 ft²

Exterior Living:
132 ft²

LIVING/ DINING	13' 11" X 12' 0"
BEDROOM	11' 4" X 9' 6"
ATELIER	5' 6" X 5' 1"
BALCONY	13' X 7' 9"



COURTYARD



SOUTH MOUNTAIN KEYPLAN

All dimensions and specifications are approximate. Certain plans are reverse or mirror image. Balcony square footages are estimated and may vary from that stated. Please see Sales Representative for details. Furniture not included. Refer to key plan for unit location and orientation. E. & O.E.

KING

HOME 511 5



2BD.13

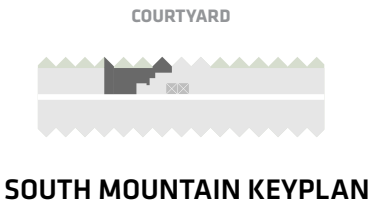
2 Bedroom
2 Bathroom

Total Living:
1196 ft²

Interior Living:
975 ft²

Exterior Living:
221 ft²

LIVING/ DINING	24' 4" X 9' 9"
MASTER BD	9' 9" X 13' 8"
BEDROOM 2	12' 2" X 12' 6"
BALCONY	13' 0" X 7' 9"



All dimensions and specifications are approximate. Certain plans are reverse or mirror image. Balcony square footages are estimated and may vary from that stated. Please see Sales Representative for details. Furniture not included. Refer to key plan for unit location and orientation. E. & O.E.

KING

HOME 601 5



1BD.02

1 Bedroom + Atelier
1 Bathroom

Total Living:
618 ft²

Interior Living:
618 ft²

Exterior Living:
N/A

LIVING	10' 2" X 8' 8"
DINING	7' 3" X 9' 6"
BEDROOM	14' 5" X 12' 3"
ATELIER	5' 5" X 5' 5"



COURTYARD



SOUTH MOUNTAIN KEYPLAN

All dimensions and specifications are approximate. Certain plans are reverse or mirror image. Balcony square footages are estimated and may vary from that stated. Please see Sales Representative for details. Furniture not included. Refer to key plan for unit location and orientation. E. & O.E.

KING

HOME 602 5



1BD.06B

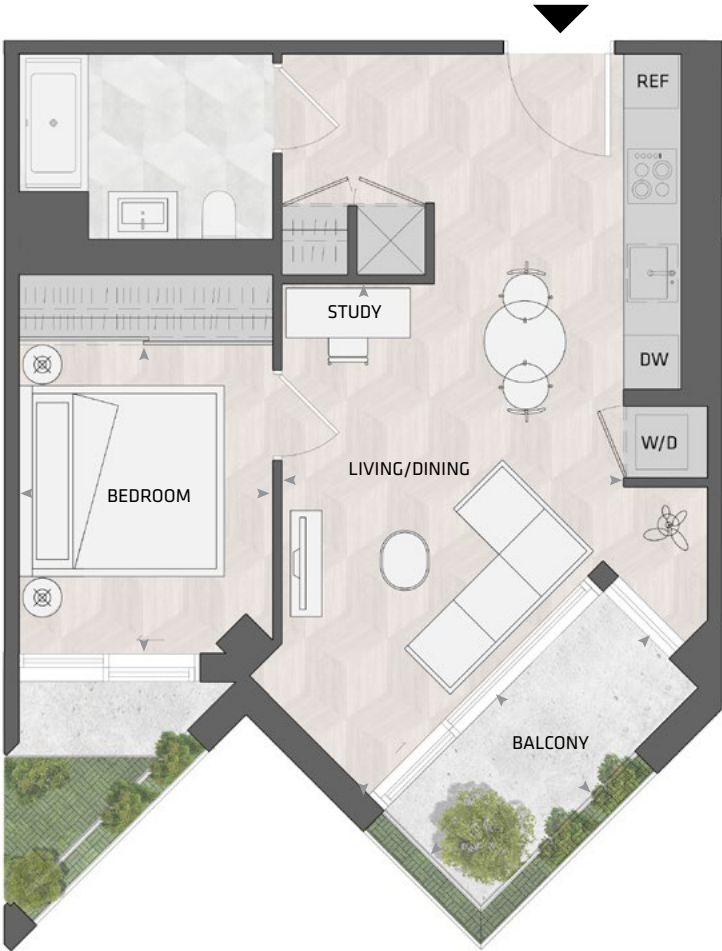
1 Bedroom + Study
1 Bathroom

Total Living:
726 ft²

Interior Living:
610 ft²

Exterior Living:
116 ft²

LIVING/ DINING	13' 11" X 12' 0"
BEDROOM	11' 4" X 9' 6"
ATELIER	5' 6" X 5' 1"
BALCONY	13' X 7' 9"



COURTYARD



SOUTH MOUNTAIN KEYPLAN

All dimensions and specifications are approximate. Certain plans are reverse or mirror image. Balcony square footages are estimated and may vary from that stated. Please see Sales Representative for details. Furniture not included. Refer to key plan for unit location and orientation. E. & O.E.

KING

HOME 603 5



1BD.06

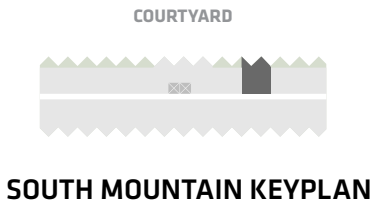
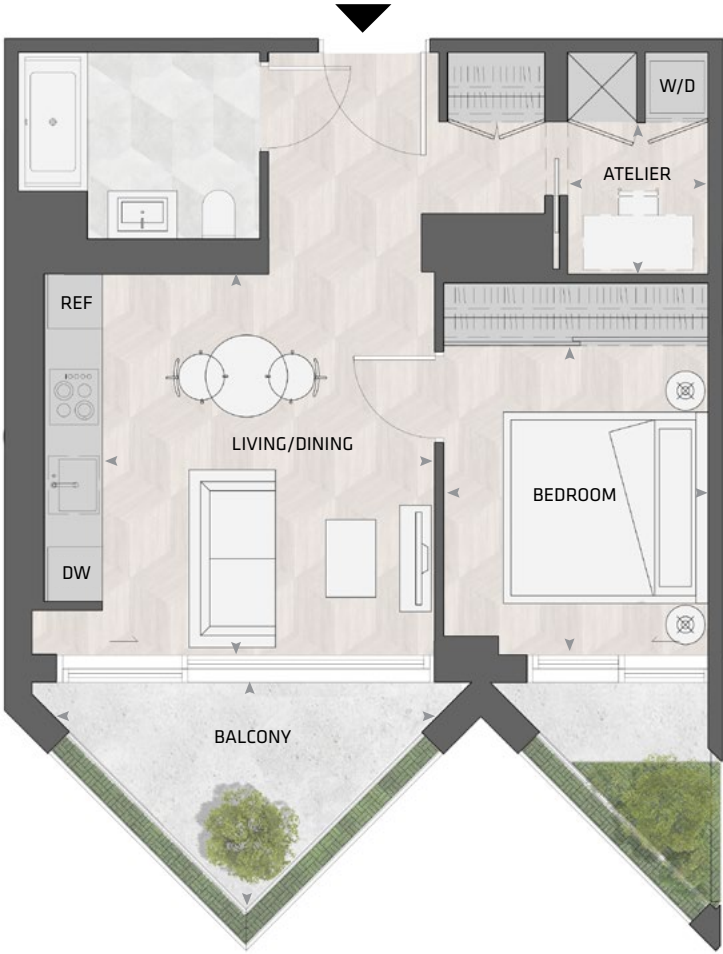
1 Bedroom + Atelier
1 Bathroom

Total Living:
725 ft²

Interior Living:
593 ft²

Exterior Living:
132 ft²

LIVING/ DINING	13' 11" X 12' 0"
BEDROOM	11' 4" X 9' 6"
ATELIER	5' 6" X 5' 1"
BALCONY	13' X 7' 9"



All dimensions and specifications are approximate. Certain plans are reverse or mirror image. Balcony square footages are estimated and may vary from that stated. Please see Sales Representative for details. Furniture not included. Refer to key plan for unit location and orientation. E. & O.E.

KING

HOME 605 5



1BD.05A

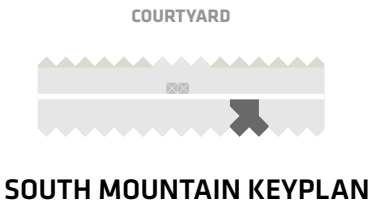
1 Bedroom + Atelier
1 Bathroom

Total Living:
724 ft²

Interior Living:
652 ft²

Exterior Living:
72 ft²

LIVING	11' 2" x 11' 8"
DINING	10' 1" x 8' 9"
BEDROOM	10' 6" x 11' 2"
ATELIER	10' 1" x 6' 8"
BALCONY	11' 0" x 4' 11"



All dimensions and specifications are approximate. Certain plans are reverse or mirror image. Balcony square footages are estimated and may vary from that stated. Please see Sales Representative for details. Furniture not included. Refer to key plan for unit location and orientation. E. & O.E.

KING

HOME 606 5



1BD.01F

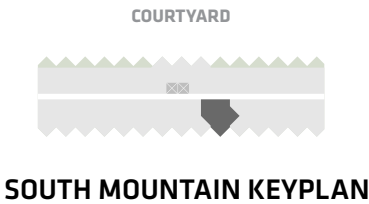
1 Bedroom + Atelier
1 Bathroom

Total Living:
724 ft²

Interior Living:
652 ft²

Exterior Living:
72 ft²

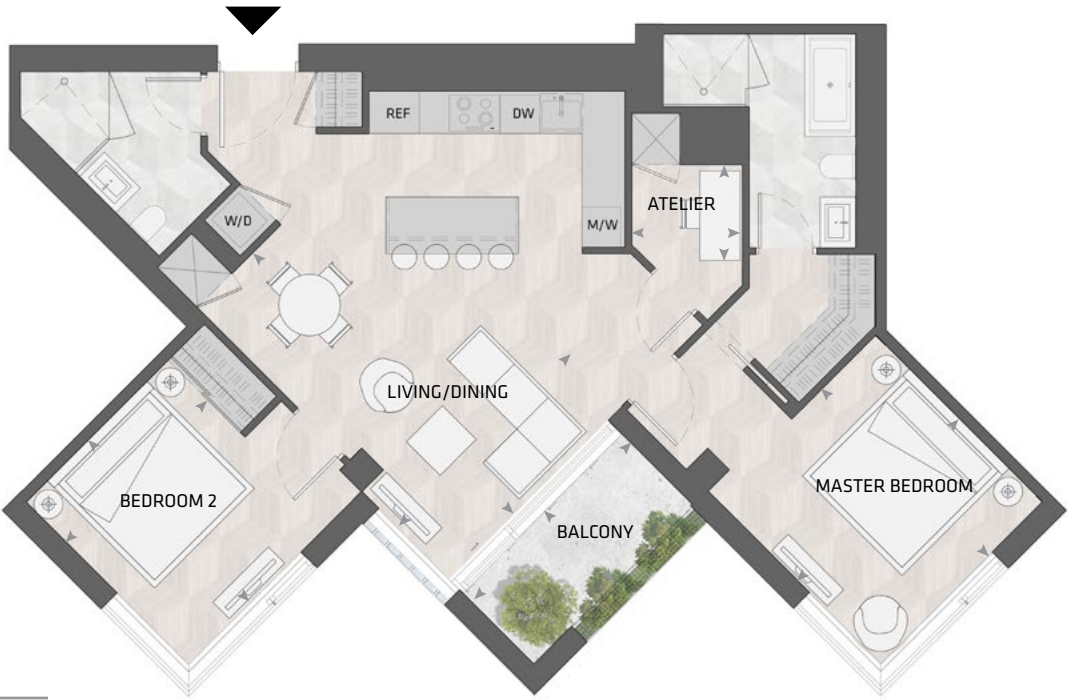
LIVING	10' 11" X 10' 3"
DINING	10' 6" X 8' 6"
BEDROOM	10' 2" X 9' 10"
ATELIER	7' 1" X 4' 8"
BALCONY	11' 0" X 4' 11"



All dimensions and specifications are approximate. Certain plans are reverse or mirror image. Balcony square footages are estimated and may vary from that stated. Please see Sales Representative for details. Furniture not included. Refer to key plan for unit location and orientation. E. & O.E.

KING

HOME 607 5



2BD.67B

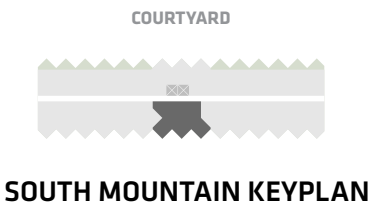
2 Bedroom + Atelier
2 Bathroom

Total Living:
1185 ft²

Interior Living:
1113 ft²

Exterior Living:
72 ft²

LIVING/ DINING	12' 0" X 18' 3"
MASTER BD	11' 2" x 11' 7"
BEDROOM 2	9' 10" x 11' 2"
ATELIER	5' 5" x 4' 8"
BALCONY	11' 0" x 4' 11"



All dimensions and specifications are approximate. Certain plans are reverse or mirror image. Balcony square footages are estimated and may vary from that stated. Please see Sales Representative for details. Furniture not included. Refer to key plan for unit location and orientation. E. & O.E.

KING

HOME 608 5



1BD.01F

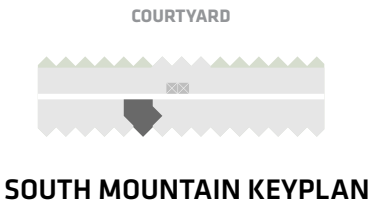
1 Bedroom + Atelier
1 Bathroom

Total Living:
725 ft²

Interior Living:
653 ft²

Exterior Living:
72 ft²

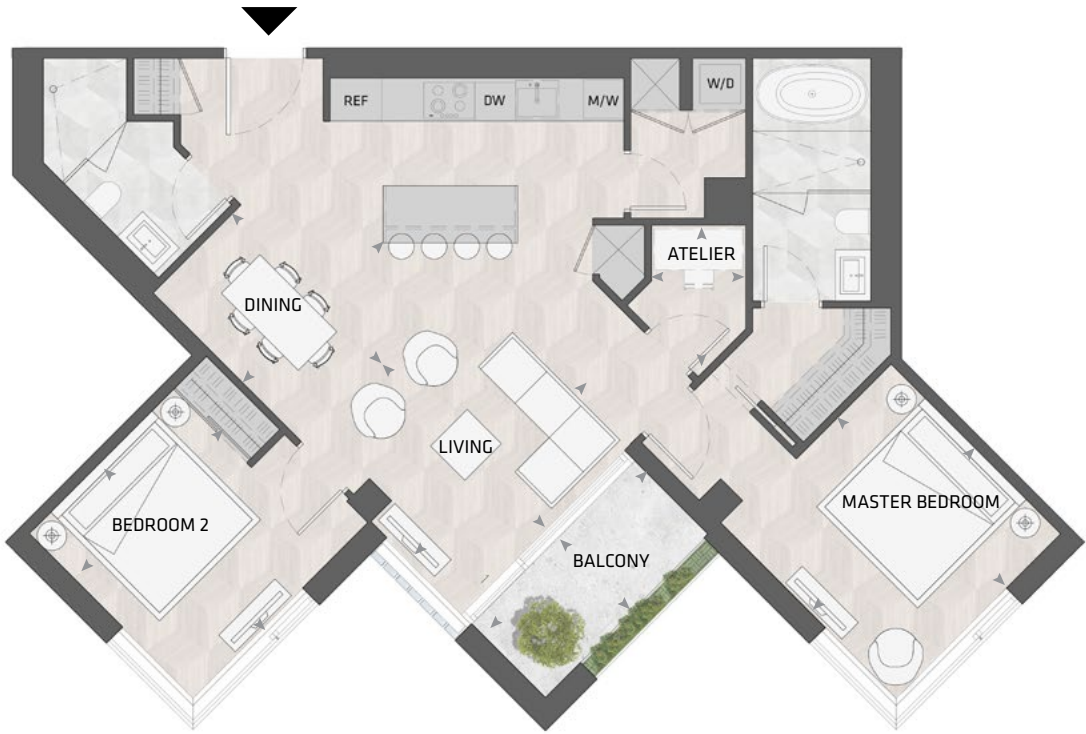
LIVING	10' 11" X 10' 3"
DINING	10' 6" X 8' 6"
BEDROOM	10' 2" X 9' 10"
ATELIER	7' 1" X 4' 8"
BALCONY	11' 0" X 4' 11"



All dimensions and specifications are approximate. Certain plans are reverse or mirror image. Balcony square footages are estimated and may vary from that stated. Please see Sales Representative for details. Furniture not included. Refer to key plan for unit location and orientation. E. & O.E.

KING

HOME 609 5



2BD.67A

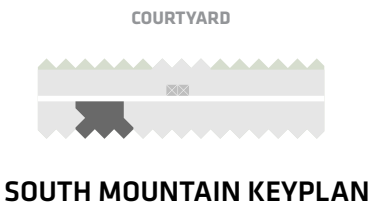
2 Bedroom + Atelier
2 Bathroom

Total Living:
1196 ft²

Interior Living:
1139 ft²

Exterior Living:
72 ft²

LIVING	12' 3" X 11' 7"
DINING	9' 7" X 9' 8"
MASTER BD	11' 0" x 11' 4"
BEDROOM 2	9' 8" x 11' 1"
ATELIER	4' 7" x 5' 0"
BALCONY	11' 0" x 4' 11"



All dimensions and specifications are approximate. Certain plans are reverse or mirror image. Balcony square footages are estimated and may vary from that stated. Please see Sales Representative for details. Furniture not included. Refer to key plan for unit location and orientation. E. & O.E.

KING

HOME 610 5



1BD.06

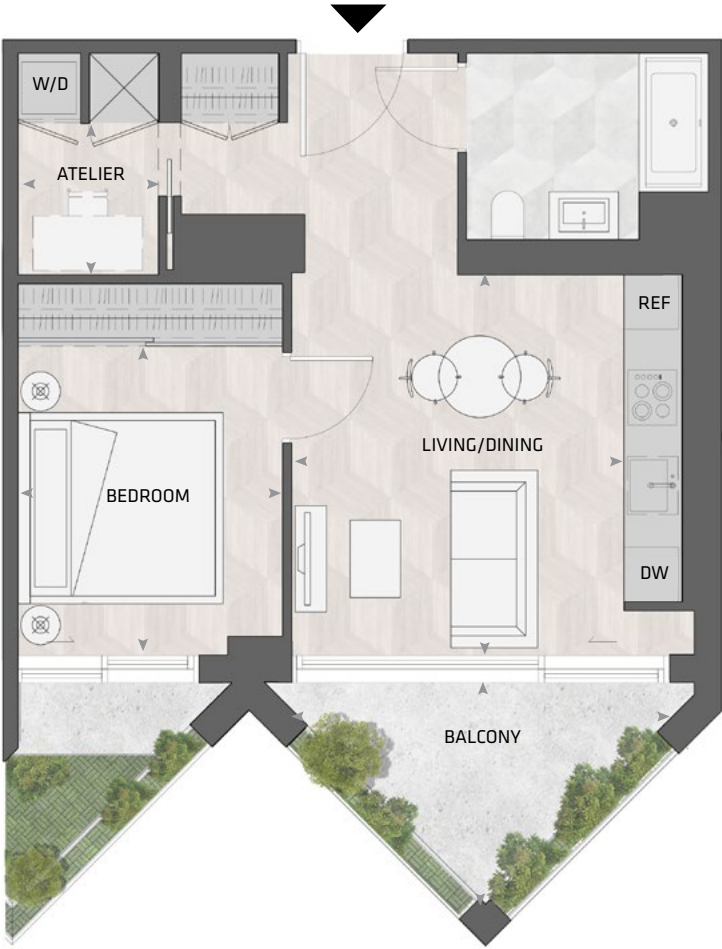
1 Bedroom + Atelier
1 Bathroom

Total Living:
725 ft²

Interior Living:
593 ft²

Exterior Living:
132 ft²

LIVING/ DINING	13' 11" X 12' 0"
BEDROOM	11' 4" X 9' 6"
ATELIER	5' 6" X 5' 1"
BALCONY	13' X 7' 9"



COURTYARD

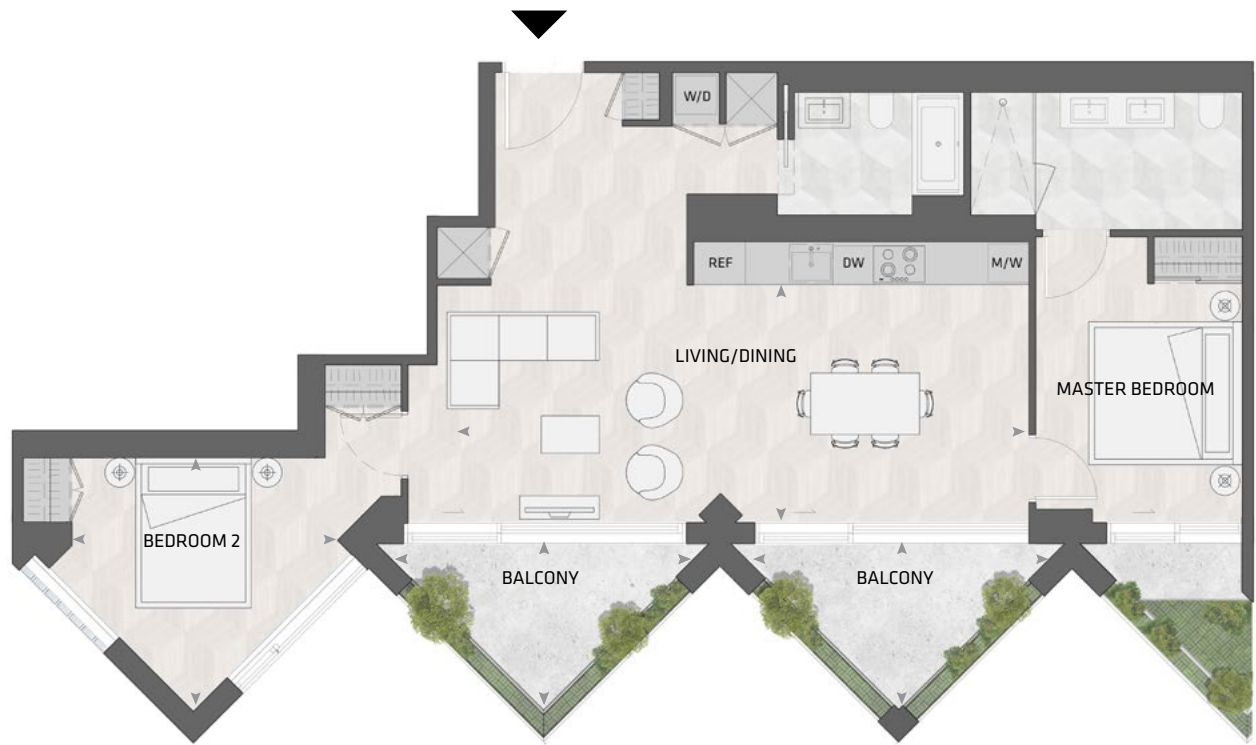


SOUTH MOUNTAIN KEYPLAN

All dimensions and specifications are approximate. Certain plans are reverse or mirror image. Balcony square footages are estimated and may vary from that stated. Please see Sales Representative for details. Furniture not included. Refer to key plan for unit location and orientation. E. & O.E.

KING

HOME 611 5



2BD.73

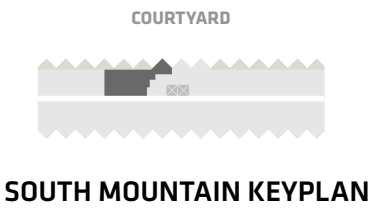
2 Bedroom
2 Bathroom

Total Living:
1319 ft²

Interior Living:
1098 ft²

Exterior Living:
221

LIVING/ DINING	28' 6" X 11' 8"
MASTER BD	11' 9" X 9' 11"
BEDROOM 2	12' 3" X 12' 2"
BALCONY	13' 0" X 7' 9"



All dimensions and specifications are approximate. Certain plans are reverse or mirror image. Balcony square footages are estimated and may vary from that stated. Please see Sales Representative for details. Furniture not included. Refer to key plan for unit location and orientation. E. & O.E.

KING

HOME 701 5



1BD.02

1 Bedroom + Atelier
1 Bathroom

Total Living:
618 ft²

Interior Living:
618 ft²

Exterior Living:
N/A

LIVING	10' 2" X 8' 8"
DINING	7' 3" X 9' 6"
BEDROOM	14' 5" X 12' 3"
ATELIER	5' 5" X 5' 5"



COURTYARD



SOUTH MOUNTAIN KEYPLAN

All dimensions and specifications are approximate. Certain plans are reverse or mirror image. Balcony square footages are estimated and may vary from that stated. Please see Sales Representative for details. Furniture not included. Refer to key plan for unit location and orientation. E. & O.E.

KING

HOME 702 5



2BD.74

2 Bedroom
2 Bathroom

Total Living:
1210 ft²

Interior Living:
1094 ft²

Exterior Living:
116

LIVING	13' 2" X 10' 10"
DINING	11' 3" X 13' 2"
MASTER BD	12' 11" X 11' 6"
BEDROOM 2	9' 11" X 13' 2"
BALCONY	11' 0" X 4' 11"



COURTYARD

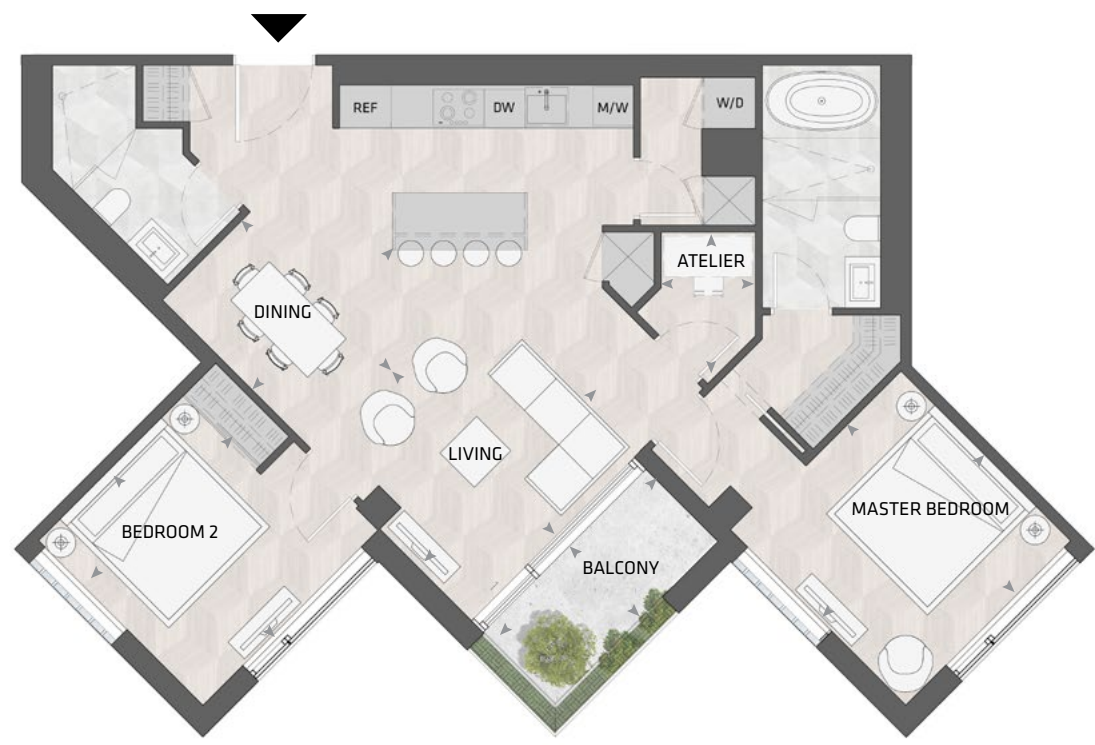


SOUTH MOUNTAIN KEYPLAN

All dimensions and specifications are approximate. Certain plans are reverse or mirror image. Balcony square footages are estimated and may vary from that stated. Please see Sales Representative for details. Furniture not included. Refer to key plan for unit location and orientation. E. & O.E.

KING

HOME 703 5



2BD.67C

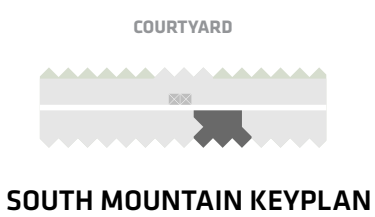
2 Bedroom + Atelier
2 Bathroom

Total Living:
1211 ft²

Interior Living:
1139 ft²

Exterior Living:
72 ft²

LIVING	12' 3" X 11' 7"
DINING	9' 7" X 9' 8"
MASTER BD	11' 0" x 11' 4"
BEDROOM 2	9' 8" x 11' 1"
ATELIER	4' 7" x 5' 0"
BALCONY	11' 0" x 4' 11"



All dimensions and specifications are approximate. Certain plans are reverse or mirror image. Balcony square footages are estimated and may vary from that stated. Please see Sales Representative for details. Furniture not included. Refer to key plan for unit location and orientation. E. & O.E.

KING

HOME 705 5



1BD.01B

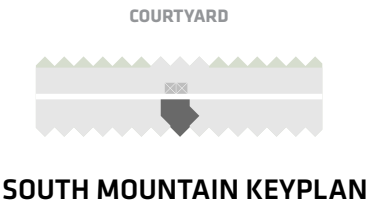
1 Bedroom + Atelier
1 Bathroom

Total Living:
852 ft²

Interior Living:
709 ft²

Exterior Living:
143 ft²

LIVING	17' 3" X 9' 6"
DINING	12' 8" X 9' 7"
BEDROOM	10' 10" X 8' 10"
ATELIER	6' 2" X 5' 9"
TERRACE	6' 8" X 9' 1"



All dimensions and specifications are approximate. Certain plans are reverse or mirror image. Balcony square footages are estimated and may vary from that stated. Please see Sales Representative for details. Furniture not included. Refer to key plan for unit location and orientation. E. & O.E.

KING

HOME 706 5



1BD.18B

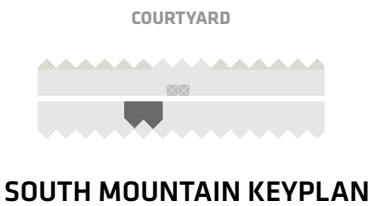
1 Bedroom + Atelier
1 Bathroom

Total Living:
812 ft²

Interior Living:
669 ft²

Exterior Living:
143 ft²

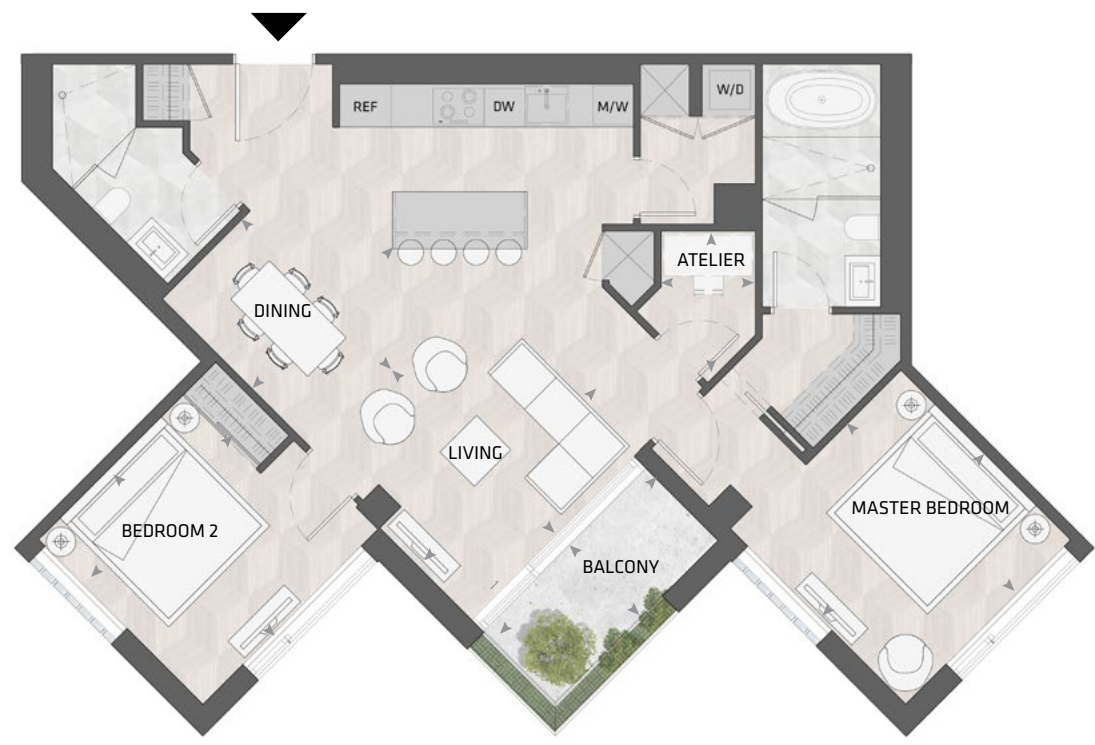
LIVING	11' 9" X 8' 4"
DINING	7' 6" X 10' 6"
BEDROOM	11' 2" X 9' 4"
ATELIER	4' 10" X 6' 2"
TERRACE	9' 1" X 9' 1"



All dimensions and specifications are approximate. Certain plans are reverse or mirror image. Balcony square footages are estimated and may vary from that stated. Please see Sales Representative for details. Furniture not included. Refer to key plan for unit location and orientation. E. & O.E.

KING

HOME 707 5



2BD.67A

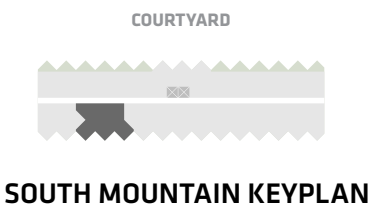
2 Bedroom + Atelier
2 Bathroom

Total Living:
1211 ft²

Interior Living:
1139 ft²

Exterior Living:
72 ft²

LIVING	12' 3" X 11' 7"
DINING	9' 7" X 9' 8"
MASTER BD	11' 0" x 11' 4"
BEDROOM 2	9' 8" x 11' 1"
ATELIER	4' 7" x 5' 0"
BALCONY	11' 0" x 4' 11"



All dimensions and specifications are approximate. Certain plans are reverse or mirror image. Balcony square footages are estimated and may vary from that stated. Please see Sales Representative for details. Furniture not included. Refer to key plan for unit location and orientation. E. & O.E.

KING

HOME 708 5



1BD.06

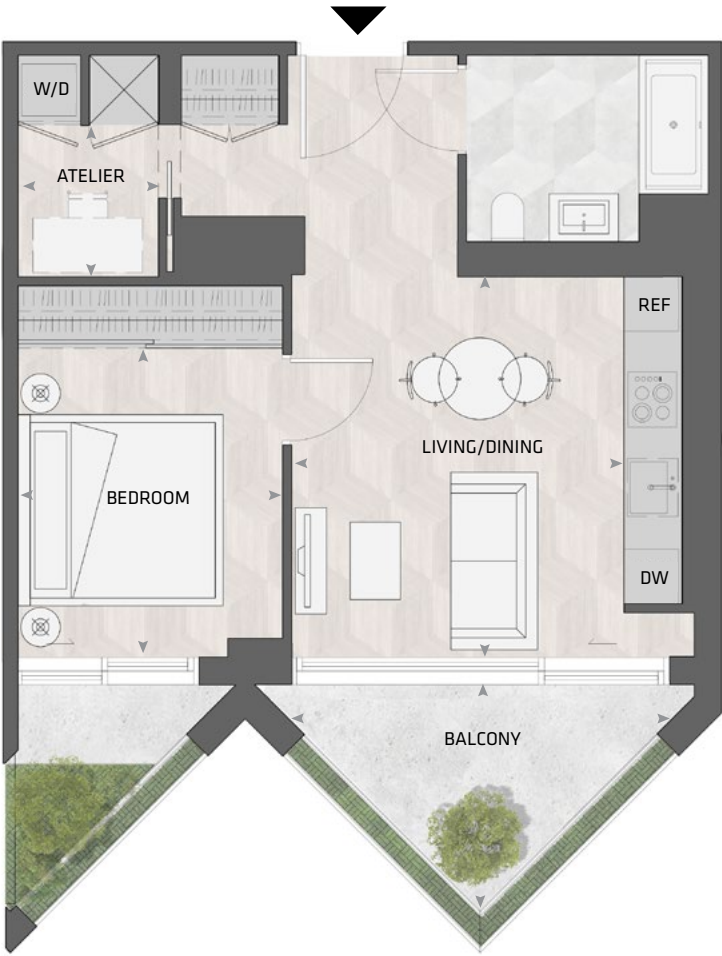
1 Bedroom + Atelier
1 Bathroom

Total Living:
725 ft²

Interior Living:
593 ft²

Exterior Living:
132 ft²

LIVING/ DINING	13' 11" X 12' 0"
BEDROOM	11' 4" X 9' 6"
ATELIER	5' 6" X 5' 1"
BALCONY	13' X 7' 9"



COURTYARD

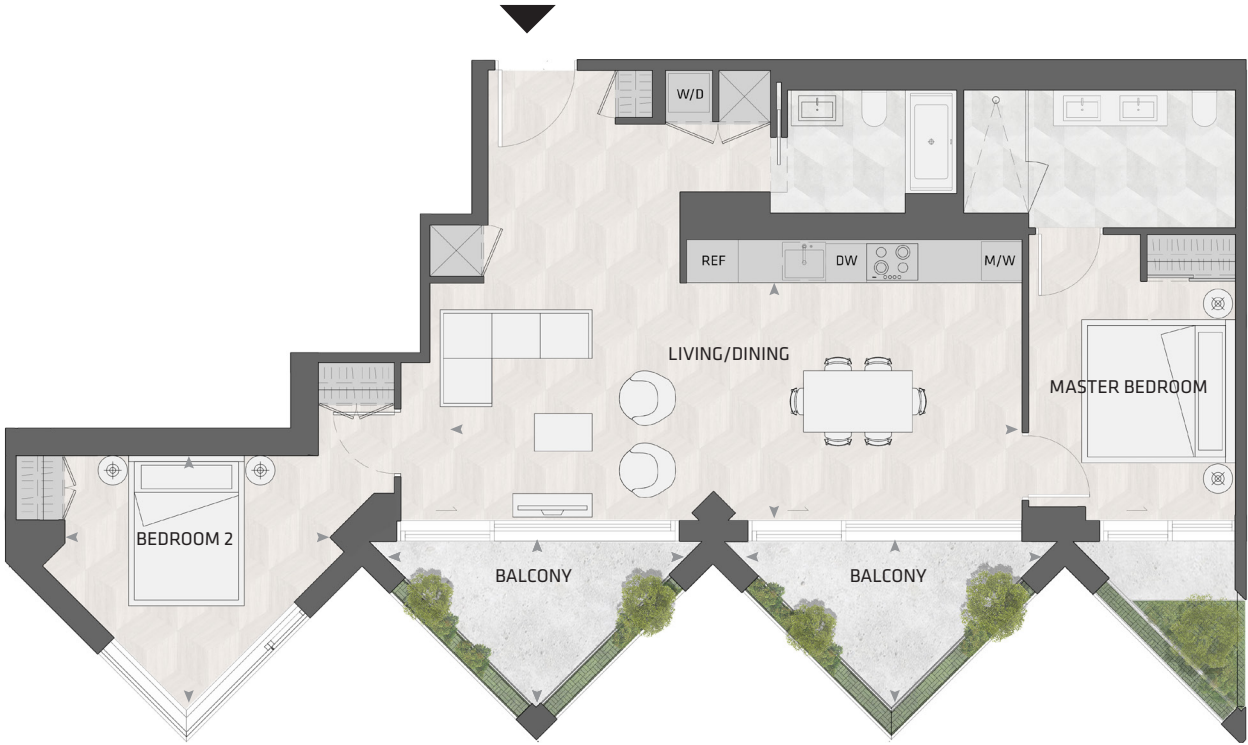


SOUTH MOUNTAIN KEYPLAN

All dimensions and specifications are approximate. Certain plans are reverse or mirror image. Balcony square footages are estimated and may vary from that stated. Please see Sales Representative for details. Furniture not included. Refer to key plan for unit location and orientation. E. & O.E.

KING

HOME 709 S



2BD.74

2 Bedroom
2 Bathroom

Total Living:
1348 ft²

Interior Living:
1127 ft²

Exterior Living:
221

LIVING/ DINING	28' 6" X 11' 8"
MASTER BD	11' 9" X 9' 11"
BEDROOM 2	12' 3" X 12' 2"
BALCONY	13' 0" X 7' 9"

COURTYARD



SOUTH MOUNTAIN KEYPLAN

All dimensions and specifications are approximate. Certain plans are reverse or mirror image. Balcony square footages are estimated and may vary from that stated. Please see Sales Representative for details. Furniture not included. Refer to key plan for unit location and orientation. E. & O.E.

KING

HOME 801 5



1BD.02

1 Bedroom + Atelier
1 Bathroom

Total Living:
618 ft²

Interior Living:
618 ft²

Exterior Living:
N/A

LIVING	10' 2" X 8' 8"
DINING	7' 3" X 9' 6"
BEDROOM	14' 5" X 12' 3"
ATELIER	5' 5" X 5' 5"



COURTYARD



SOUTH MOUNTAIN KEYPLAN

All dimensions and specifications are approximate. Certain plans are reverse or mirror image. Balcony square footages are estimated and may vary from that stated. Please see Sales Representative for details. Furniture not included. Refer to key plan for unit location and orientation. E. & O.E.

KING

HOME 802 5



2BD.74

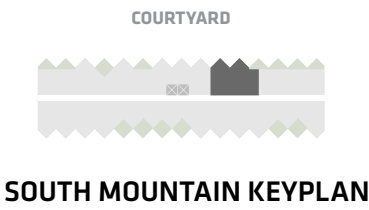
2 Bedroom
2 Bathroom

Total Living:
1210 ft²

Interior Living:
1094 ft²

Exterior Living:
116

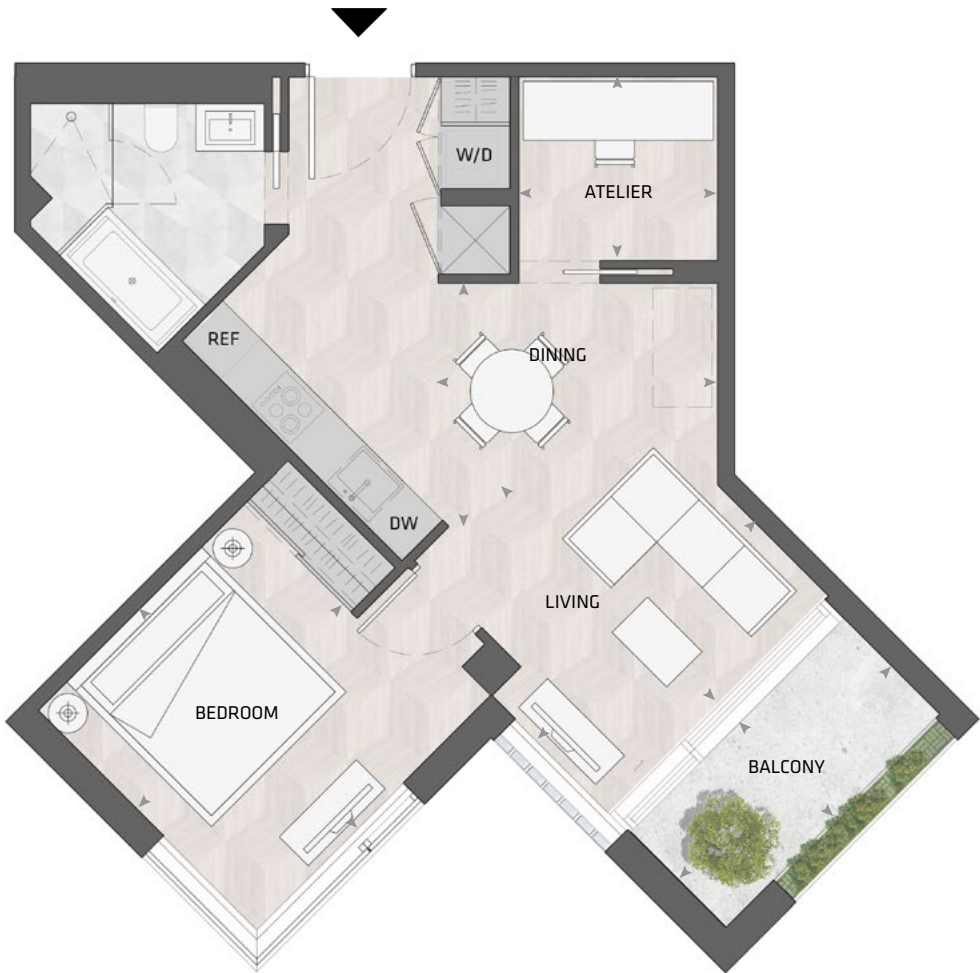
LIVING	13' 2" X 10' 10"
DINING	11' 3" X 13' 2"
MASTER BD	12' 11" X 11' 6"
BEDROOM 2	9' 11" X 13' 2"
BALCONY	11' 0" X 4' 11"



All dimensions and specifications are approximate. Certain plans are reverse or mirror image. Balcony square footages are estimated and may vary from that stated. Please see Sales Representative for details. Furniture not included. Refer to key plan for unit location and orientation. E. & O.E.

KING

HOME 803 5



1BD.05A

1 Bedroom + Atelier
1 Bathroom

Total Living:
725 ft²

Interior Living:
652 ft²

Exterior Living:
72 ft²

LIVING	11' 2" x 11' 8"
DINING	10' 1" x 8' 9"
BEDROOM	10' 6" x 11' 2"
ATELIER	10' 1" x 6' 8"
BALCONY	11' 0" x 4' 11"

COURTYARD

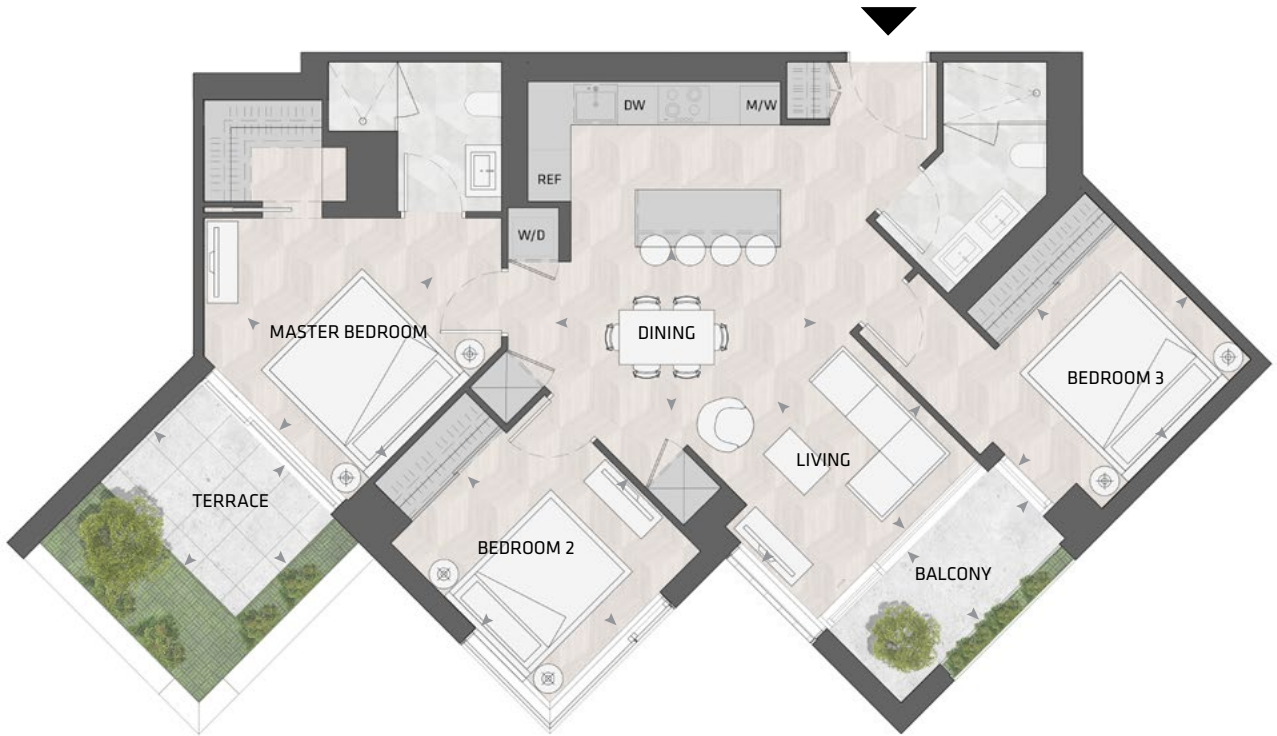


SOUTH MOUNTAIN KEYPLAN

All dimensions and specifications are approximate. Certain plans are reverse or mirror image. Balcony square footages are estimated and may vary from that stated. Please see Sales Representative for details. Furniture not included. Refer to key plan for unit location and orientation. E. & O.E.

KING

HOME 805 5



3BD.35B

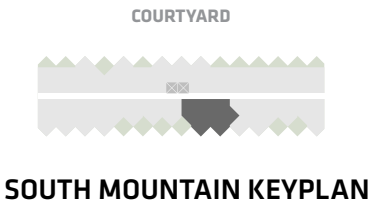
3 Bedroom
2 Bathroom

Total Living:
1353 ft²

Interior Living:
1138 ft²

Exterior Living:
215 ft²

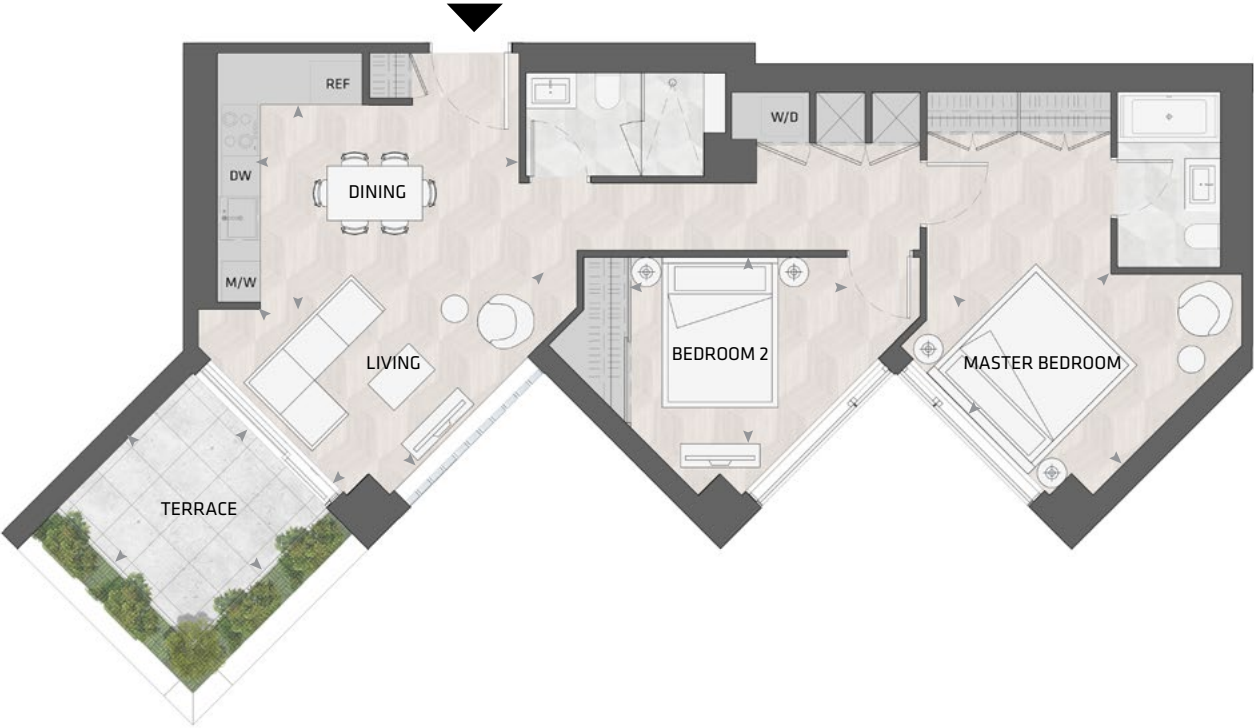
LIVING	10' 9" X 8' 7"
DINING	12' 5" X 7' 2"
MASTER BD	9' 10" x 9' 10"
BEDROOM 2	10' 3" x 10' 10"
BEDROOM 3	11' 7" x 9' 0"
BALCONY	11' 0" X 4' 11"
TERRACE	9' 1" X 6' 8"



All dimensions and specifications are approximate. Certain plans are reverse or mirror image. Balcony square footages are estimated and may vary from that stated. Please see Sales Representative for details. Furniture not included. Refer to key plan for unit location and orientation. E. & O.E.

KING

HOME 806 5



2BD.69

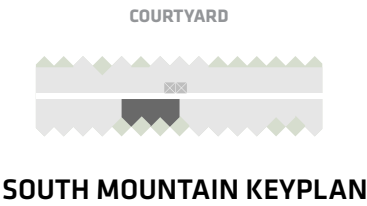
2 Bedroom
2 Bathroom

Total Living:
1143 ft²

Interior Living:
1000 ft²

Exterior Living:
143 ft²

LIVING	11' 11" X 10' 11"
DINING	12' 7" X 9' 6"
MASTER BD	9' 8" X 12' 1"
BEDROOM 2	12' 1" x 8' 9"
TERRACE	9' 1" x 9' 1"



All dimensions and specifications are approximate. Certain plans are reverse or mirror image. Balcony square footages are estimated and may vary from that stated. Please see Sales Representative for details. Furniture not included. Refer to key plan for unit location and orientation. E. & O.E.

KING

HOME 807 5



2BD.68

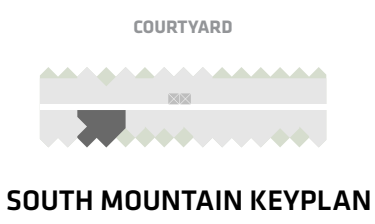
2 Bedroom + Atelier
2 Bathroom

Total Living:
1061 ft²

Interior Living:
997 ft²

Exterior Living:
64 ft²

LIVING	11' 8" x 12' 0"
DINING	11' 11" x 10' 9"
MASTER BD	11' 3" x 13' 3"
BEDROOM 2	9' 10" x 11' 2"
ATELIER	5' 5" x 5' 5"
BALCONY	9' 6" x 4' 11"



All dimensions and specifications are approximate. Certain plans are reverse or mirror image. Balcony square footages are estimated and may vary from that stated. Please see Sales Representative for details. Furniture not included. Refer to key plan for unit location and orientation. E. & O.E.

KING

HOME 808 5



1BD.13

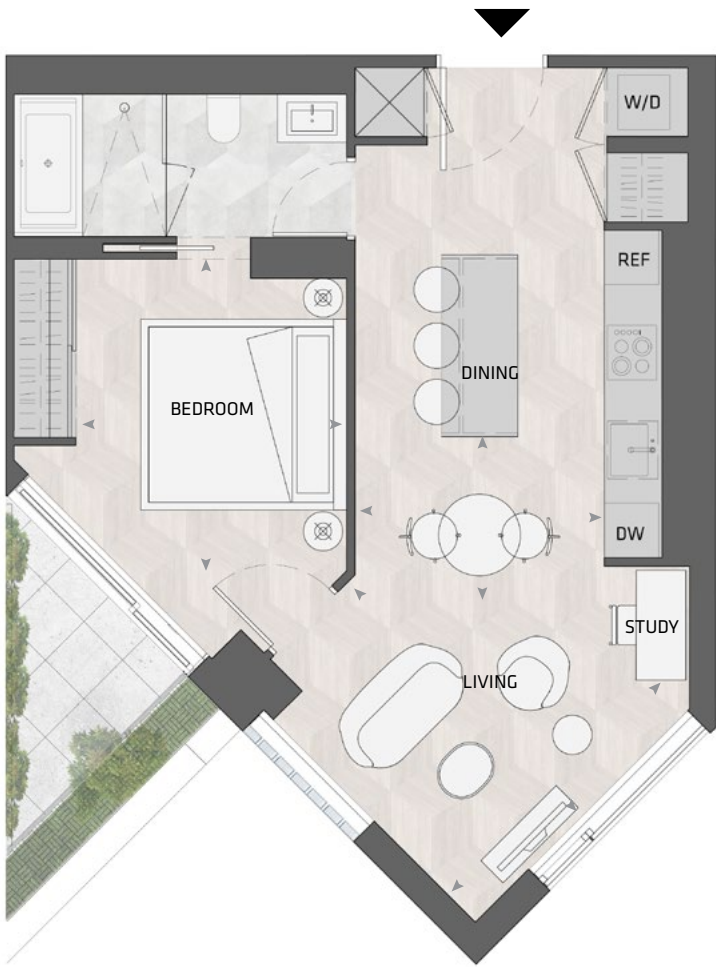
1 Bedroom + Study
1 Bathroom

Total Living:
726 ft²

Interior Living:
654 ft²

Exterior Living:
72 ft²

LIVING	12' 4" X 12' 0"
DINING	9' 0" X 6' 6"
BEDROOM	9' 9" X 11' 3"



COURTYARD

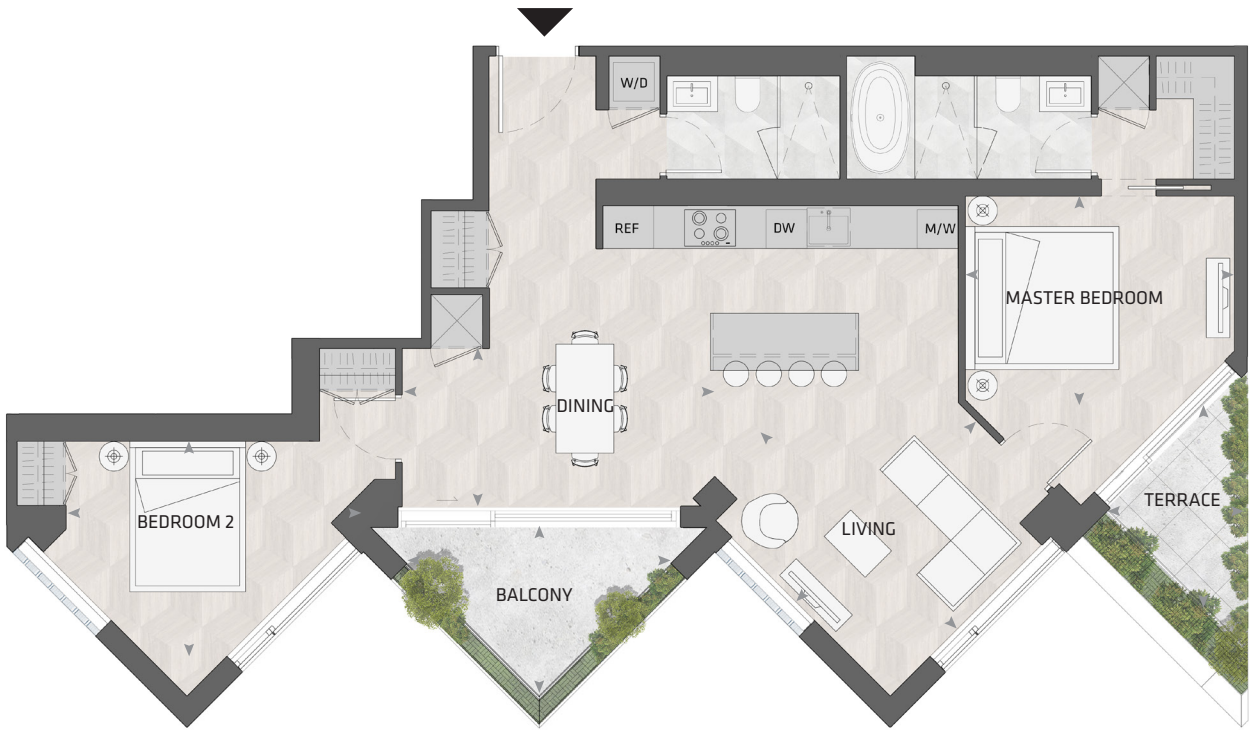


SOUTH MOUNTAIN KEYPLAN

All dimensions and specifications are approximate. Certain plans are reverse or mirror image. Balcony square footages are estimated and may vary from that stated. Please see Sales Representative for details. Furniture not included. Refer to key plan for unit location and orientation. E. & O.E.

KING

HOME 809 5



2BD.75A

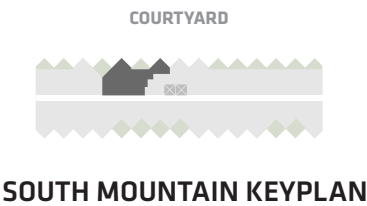
2 Bedroom
2 Bathroom

Total Living:
1348 ft²

Interior Living:
1188 ft²

Exterior Living:
160 ft²

LIVING	12' 8" X 13' 5"
DINING	15' 1" x 7' 10"
MASTER BD	13' 1' X 9' 10"
BEDROOM 2	14' 4" x 10' 4"
BALCONY	13' 0" x 7' 9"
TERRACE	6' 4" x 3' 6"



All dimensions and specifications are approximate. Certain plans are reverse or mirror image. Balcony square footages are estimated and may vary from that stated. Please see Sales Representative for details. Furniture not included. Refer to key plan for unit location and orientation. E. & O.E.

KING

HOME 901 S



1BD.02

1 Bedroom + Atelier
1 Bathroom

Total Living:
638 ft²

Interior Living:
638 ft²

Exterior Living:
N/A

LIVING	10' 2" X 8' 8"
DINING	7' 3" X 9' 6"
BEDROOM	14' 5" X 12' 3"
ATELIER	5' 5" X 5' 5"



COURTYARD



SOUTH MOUNTAIN KEYPLAN

All dimensions and specifications are approximate. Certain plans are reverse or mirror image. Balcony square footages are estimated and may vary from that stated. Please see Sales Representative for details. Furniture not included. Refer to key plan for unit location and orientation. E. & O.E.

KING

HOME 902 5



2BD.76

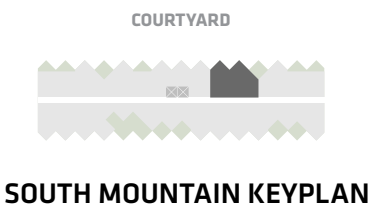
2 Bedroom + Atelier
2 Bathroom

Total Living:
1208 ft²

Interior Living:
1136 ft²

Exterior Living:
72 ft²

LIVING	10' 0" x 9' 3"
DINING	10' 11" x 11' 9"
MASTER BD	12' 0" x 11' 8"
BEDROOM 2	9' 8" x 9' 2"
ATELIER	6' 10" x 6' 10"
TERRACE	3' 6" x 6' 4"



All dimensions and specifications are approximate. Certain plans are reverse or mirror image. Balcony square footages are estimated and may vary from that stated. Please see Sales Representative for details. Furniture not included. Refer to key plan for unit location and orientation. E. & O.E.

KING

HOME 903 S



2BD.46

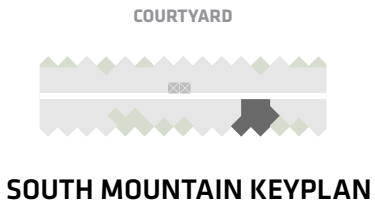
2 Bedroom
2 Bathroom

Total Living:
889 ft²

Interior Living:
817 ft²

Exterior Living:
72 ft²

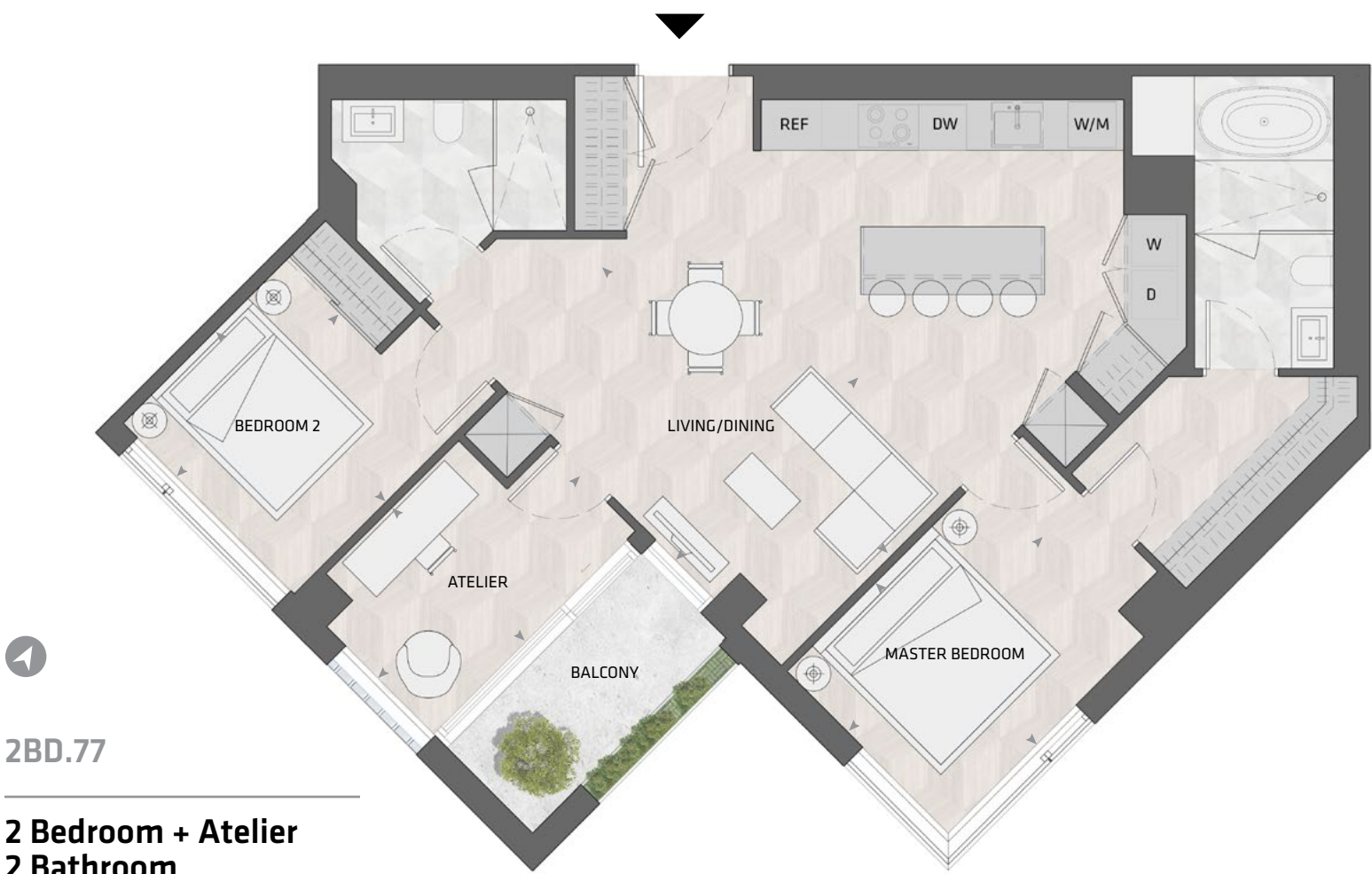
LIVING	11' 4" X 9' 0"
DINING	11' 3" X 10' 1"
MASTER BD	9' 1" X 11' 11"
BEDROOM 2	11' 6" X 8' 6"
BALCONY	11' 0" X 4' 11"



All dimensions and specifications are approximate. Certain plans are reverse or mirror image. Balcony square footages are estimated and may vary from that stated. Please see Sales Representative for details. Furniture not included. Refer to key plan for unit location and orientation. E. & O.E.

KING

HOME 905 5



2BD.77

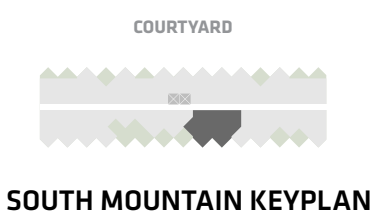
2 Bedroom + Atelier
2 Bathroom

Total Living:
1213 ft²

Interior Living:
1141 ft²

Exterior Living:
72 ft²

LIVING/ DINING	10' 6" X 16' 9"
MASTER BD	12' 0" X 9' 4"
BEDROOM 2	9' 5" - 9' 10"
ATELIER	9' 2" X 7' 9"
BALCONY	11' 0" X 4' 11"



All dimensions and specifications are approximate. Certain plans are reverse or mirror image. Balcony square footages are estimated and may vary from that stated. Please see Sales Representative for details. Furniture not included. Refer to key plan for unit location and orientation. E. & O.E.

KING

HOME 906 5



2BD.70

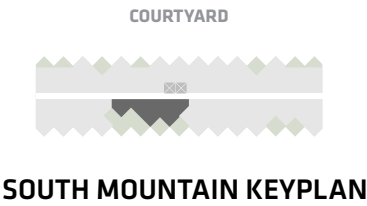
2 Bedroom
2 Bathroom

Total Living:
1179 ft²

Interior Living:
1036 ft²

Exterior Living:
143 ft²

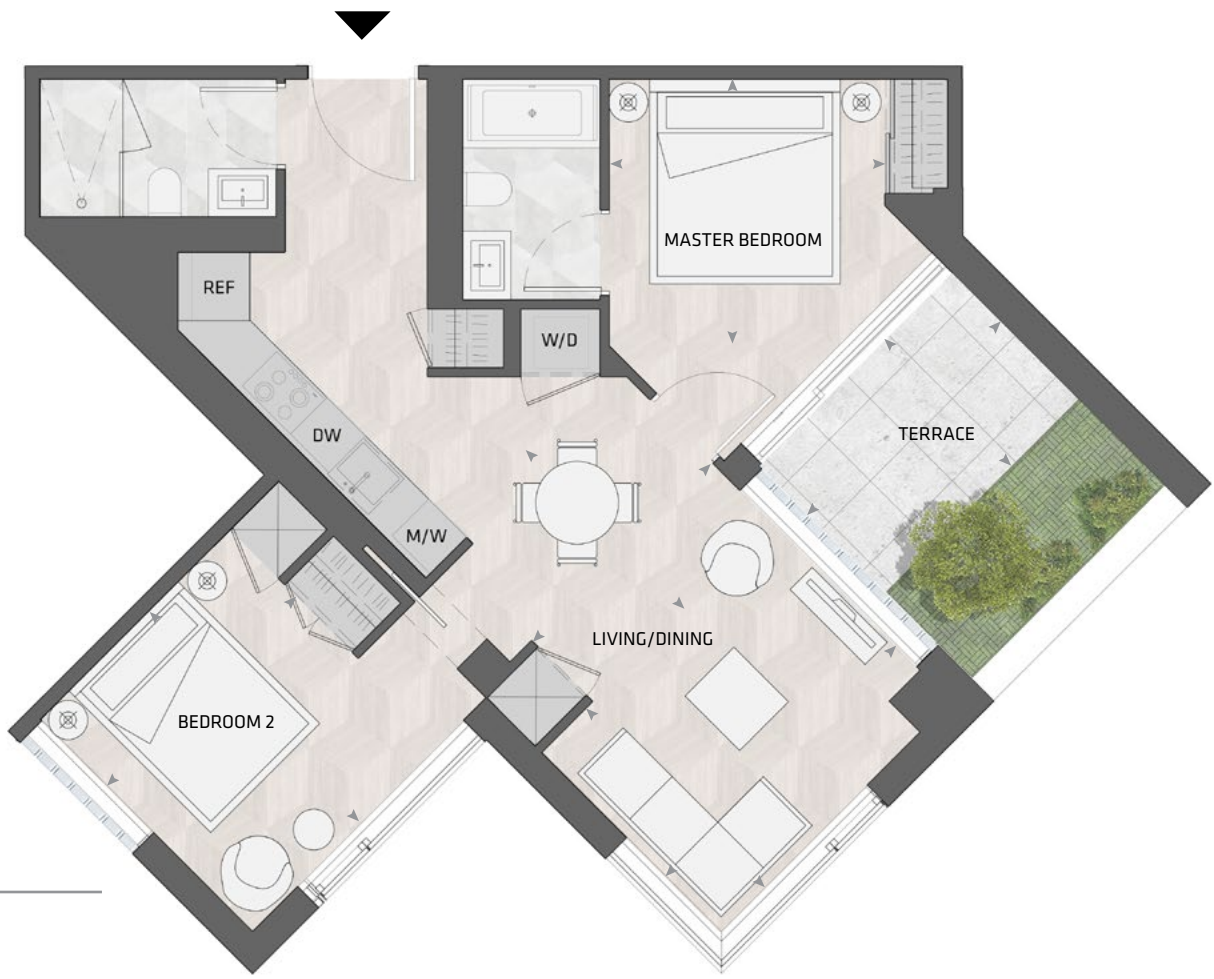
LIVING	9' 4" X 12' 10"
DINING	11' 0" X 9' 0"
MASTER BD	11' 4" X 10' 9"
BEDROOM 2	10' 9" X 9' 4"
TERRACE	9' 1" X 9' 1"



All dimensions and specifications are approximate. Certain plans are reverse or mirror image. Balcony square footages are estimated and may vary from that stated. Please see Sales Representative for details. Furniture not included. Refer to key plan for unit location and orientation. E. & O.E.

KING

HOME 907 S



2BD.30

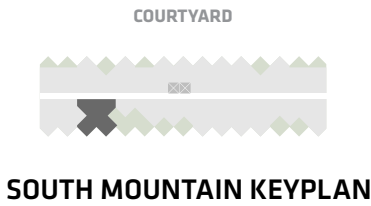
2 Bedroom
2 Bathroom

Total Living:
950 ft²

Interior Living:
830 ft²

Exterior Living:
120 ft²

LIVING	11' 10" X 9' 2"
DINING	9' 2" X 9' 11"
MASTER BD	9' 11" X 9' 8"
BEDROOM 2	9' 8" X 11' 1"
TERRACE	10' 0" X 6' 9"



All dimensions and specifications are approximate. Certain plans are reverse or mirror image. Balcony square footages are estimated and may vary from that stated. Please see Sales Representative for details. Furniture not included. Refer to key plan for unit location and orientation. E. & O.E.

KING

HOME 908 5



1BD.13

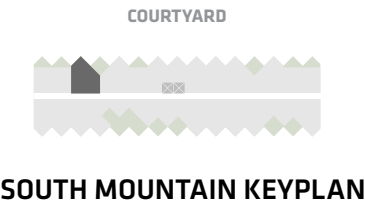
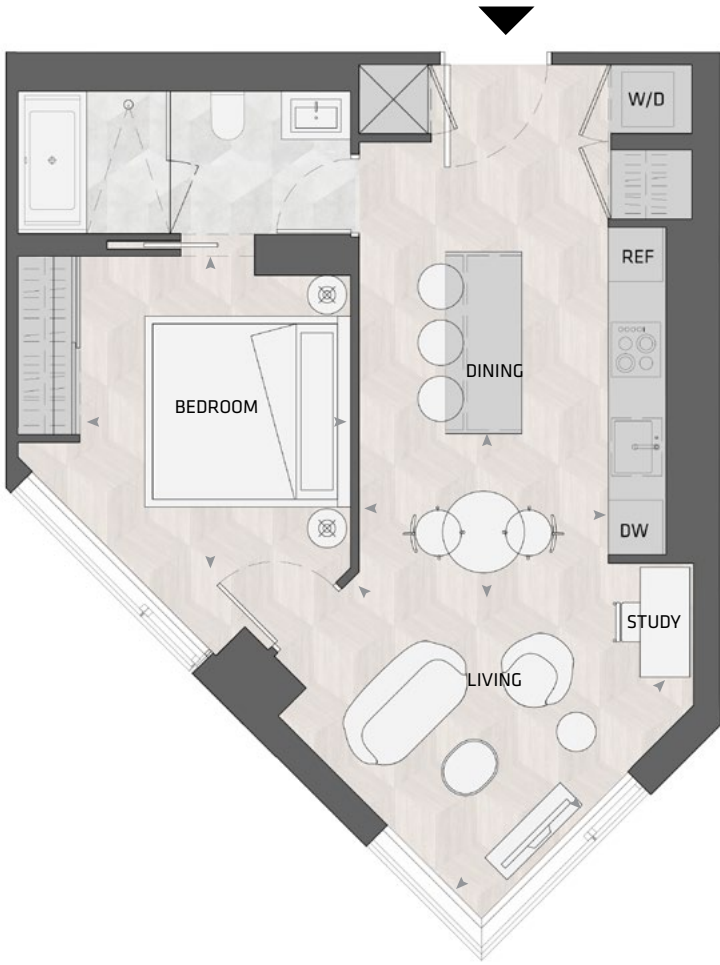
1 Bedroom + Study
1 Bathroom

Total Living:
654 ft²

Interior Living:
654 ft²

Exterior Living:
N/A

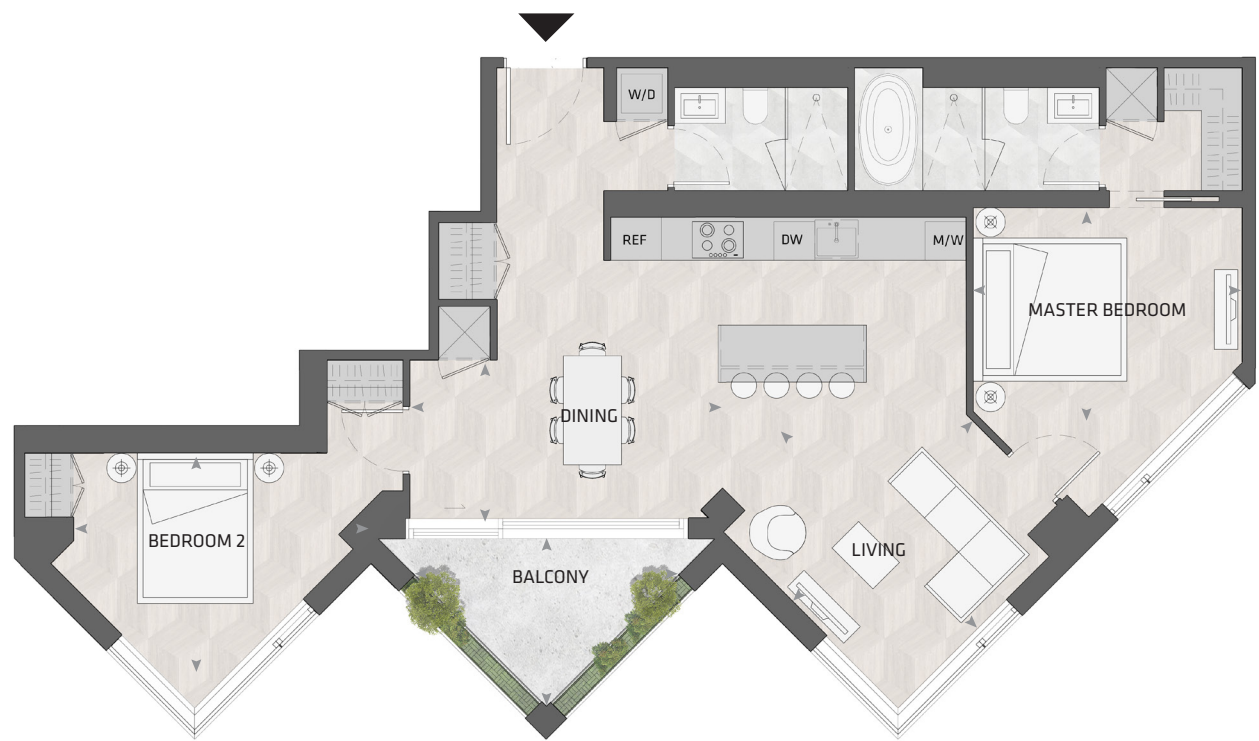
LIVING	12' 4" X 12' 0"
DINING	9' 0" X 6' 6"
BEDROOM	9' 9" X 11' 3"



All dimensions and specifications are approximate. Certain plans are reverse or mirror image. Balcony square footages are estimated and may vary from that stated. Please see Sales Representative for details. Furniture not included. Refer to key plan for unit location and orientation. E. & O.E.

KING

HOME 909 S



2BD.75B

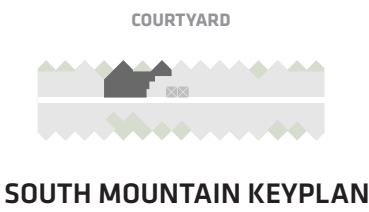
2 Bedroom
2 Bathroom

Total Living:
1267 ft²

Interior Living:
1179 ft²

Exterior Living:
88 ft²

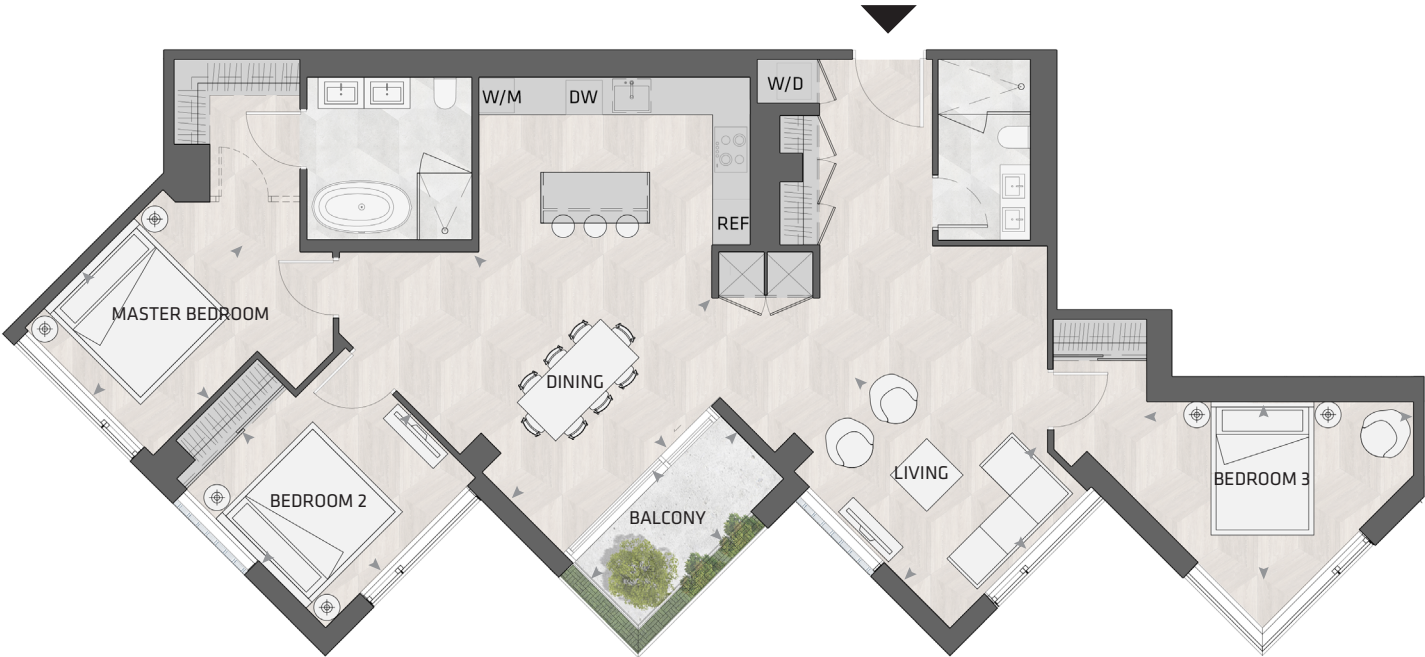
LIVING	12' 8" X 13' 5"
DINING	15' 1" x 7' 10"
MASTER BD	13' 1' X 9' 10"
BEDROOM 2	14' 4" x 10' 4"
BALCONY	13' 0" x 7' 9"



All dimensions and specifications are approximate. Certain plans are reverse or mirror image. Balcony square footages are estimated and may vary from that stated. Please see Sales Representative for details. Furniture not included. Refer to key plan for unit location and orientation. E. & O.E.

KING

HOME 1001 S



3BD.55

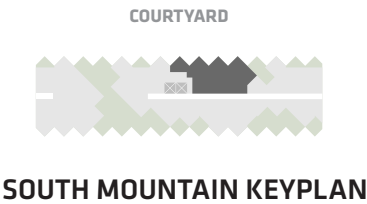
3 Bedroom
2 Bathroom

Total Living:
1675 ft²

Interior Living:
1603 ft²

Exterior Living:
72 ft²

LIVING	10' 6" X 12' 0"
DINING	15' 2" X 12' 0"
MASTER BD	10' 10" X 9' 10"
BEDROOM 2	10' 7" X 11' 8"
BEDROOM 3	14' 5" X 8' 9"
ATELIER	5' 4" X 5' 11"
BALCONY	11' 0" X 4' 11"



All dimensions and specifications are approximate. Certain plans are reverse or mirror image. Balcony square footages are estimated and may vary from that stated. Please see Sales Representative for details. Furniture not included. Refer to key plan for unit location and orientation. E. & O.E.

KING

HOME 1002 S



3BD.48

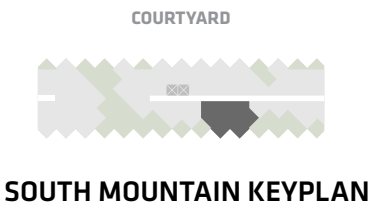
3 Bedroom
2 Bathroom

Total Living:
1540 ft²

Interior Living:
1230 ft²

Exterior Living:
310 ft²

LIVING	12' 9" X 11' 8"
DINING	13' 7" X 14' 0"
MASTER BD	15' 8" X 14' 5"
BEDROOM 2	11' 6" X 10' 4"
BEDROOM 3	8' 6" X 8' 4"
TERRACE A	8' 3" X 6' 8"
TERRACE B	9' 1" X 6' 8"



All dimensions and specifications are approximate. Certain plans are reverse or mirror image. Balcony square footages are estimated and may vary from that stated. Please see Sales Representative for details. Furniture not included. Refer to key plan for unit location and orientation. E. & O.E.

KING

HOME 1003 S



3BD.54

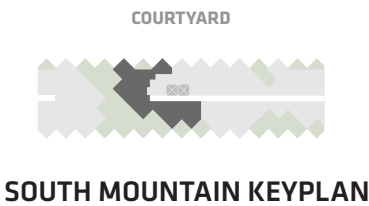
3 Bedroom + Family
2 Bathroom

Total Living:
2594 ft²

Interior Living:
2053 ft²

Exterior Living:
541 ft²

LIVING	11' 8" X 13' 9"
DINING	12' 0" X 12' 0"
MASTER BD	11' 0" X 18' 0"
BEDROOM 2	11' 9" X 10' 9"
BEDROOM 3	14' 2" X 10' 4"
STUDY	6' 8" X 6' 8"
TERRACE A	6' 8" X 9' 1"
TERRACE B	6' 8" X 8' 3"
BALCONY	13' 0" X 7' 9"



All dimensions and specifications are approximate. Certain plans are reverse or mirror image. Balcony square footages are estimated and may vary from that stated. Please see Sales Representative for details. Furniture not included. Refer to key plan for unit location and orientation. E. & O.E.

KING

HOME 1101 S



1BD.02

1 Bedroom + Atelier
1 Bathroom

Total Living:
638 ft²

Interior Living:
638 ft²

Exterior Living:
N/A

LIVING	10' 2" X 8' 8"
DINING	7' 3" X 9' 6"
BEDROOM	14' 5" X 12' 3"
ATELIER	5' 5" X 5' 5"

COURTYARD



SOUTH MOUNTAIN KEYPLAN

All dimensions and specifications are approximate. Certain plans are reverse or mirror image. Balcony square footages are estimated and may vary from that stated. Please see Sales Representative for details. Furniture not included. Refer to key plan for unit location and orientation. E. & O.E.

KING

HOME 1102 S



3BD.56

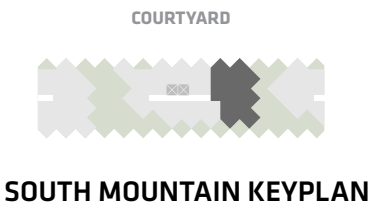
3 Bedroom + Atelier + Family
2 Bathroom

Total Living:
2338 ft²

Interior Living:
1935 ft²

Exterior Living:
403 ft²

LIVING	13' 1" X 11' 7"
FAMILY RM	13' 7" X 11' 1"
DINING	10' 8" X 11' 1"
MASTER BD	14' 1" X 12' 8"
BEDROOM 2	11' 2" X 13' 4"
BEDROOM 3	13' 6" X 10' 5"
ATELIER	7' 3" X 7' 5"
TERRACE A	9' 1" X 9' 1"
TERRACE B	8' 3" X 6' 8"



All dimensions and specifications are approximate. Certain plans are reverse or mirror image. Balcony square footages are estimated and may vary from that stated. Please see Sales Representative for details. Furniture not included. Refer to key plan for unit location and orientation. E. & O.E.

KING

HOME 1103 S



2BD.71

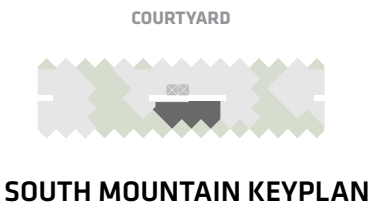
2 Bedroom + Study
2 Bathroom

Total Living:
1223 ft²

Interior Living:
1080 ft²

Exterior Living:
143 ft²

LIVING	12' 7" x 11' 11"
DINING	10' 11" x 10' 7"
MASTER BD	11' 0" x 11' 10"
BEDROOM 2	9' 11" x 12' 0"
TERRACE	9' 1" x 6' 8"



All dimensions and specifications are approximate. Certain plans are reverse or mirror image. Balcony square footages are estimated and may vary from that stated. Please see Sales Representative for details. Furniture not included. Refer to key plan for unit location and orientation. E. & O.E.

KING

HOME 1105 S



3BD.14

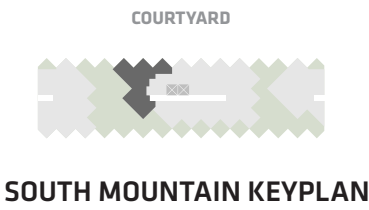
3 Bedroom
2 Bathroom

Total Living:
1404 ft²

Interior Living:
1260 ft²

Exterior Living:
144 ft²

LIVING	11' 9" X 11' 9"
DINING	11' 10" X 9' 7"
MASTER BD	8' 9' X 10' 0"
BEDROOM 2	8' 6" X 10' 9"
BEDROOM 3	10' 9" X 13' 5"
TERRACE	9' 1" X 6' 8"



All dimensions and specifications are approximate. Certain plans are reverse or mirror image. Balcony square footages are estimated and may vary from that stated. Please see Sales Representative for details. Furniture not included. Refer to key plan for unit location and orientation. E. & O.E.

KING

HOME 1201 S



3BD.58

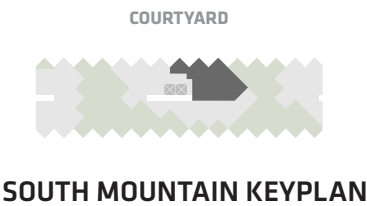
3 Bedroom
2 Bathroom

Total Living:
1741 ft²

Interior Living:
1431 ft²

Exterior Living:
310 ft²

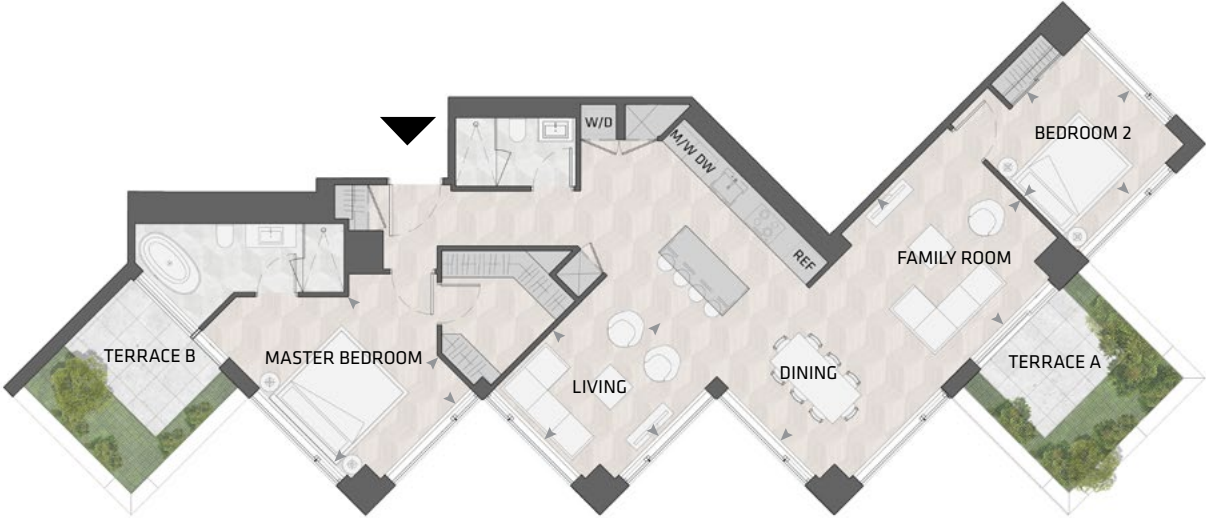
LIVING	12' 0" X 13' 5"
DINING	12' 6" X 10' 1"
MASTER BD	12' 5" X 10' 3"
BEDROOM 2	10' 2" X 11' 0"
BEDROOM 3	10' 4" X 8' 6"
TERRACE	6' 8" X 8' 3"



All dimensions and specifications are approximate. Certain plans are reverse or mirror image. Balcony square footages are estimated and may vary from that stated. Please see Sales Representative for details. Furniture not included. Refer to key plan for unit location and orientation. E. & O.E.

KING

HOME 1202 S



2BD.78

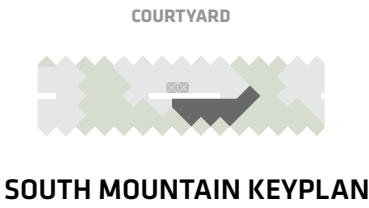
2 Bedroom + Family
2 Bathroom

Total Living:
1792 ft²

Interior Living:
1482 ft²

Exterior Living:
310 ft²

LIVING	12' 0" X 10' 9"
FAMILY RM/ DINING	24' 6" X 13' 0"
MASTER BD	10' 9" X 11' 3"
BEDROOM 2	10' 11" X 10' 8"
TERRACE A	8' 3" X 6' 8"
TERRACE B	9' 1" X 6' 8"



All dimensions and specifications are approximate. Certain plans are reverse or mirror image. Balcony square footages are estimated and may vary from that stated. Please see Sales Representative for details. Furniture not included. Refer to key plan for unit location and orientation. E. & O.E.

KING

HOME 1203 S



3BD.22

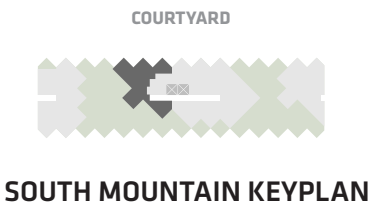
3 Bedroom
2 Bathroom

Total Living:
1432 ft²

Interior Living:
1289 ft²

Exterior Living:
143 ft²

LIVING	11' 9" X 13' 5"
DINING	14' 2" X 9' 0"
MASTER BD	9' 10" X 12' 0"
BEDROOM 2	10' 4" X 9' 11"
BEDROOM 3	11' 1" X 10' 9"
TERRACE	9' 1" X 9' 1"



All dimensions and specifications are approximate. Certain plans are reverse or mirror image. Balcony square footages are estimated and may vary from that stated. Please see Sales Representative for details. Furniture not included. Refer to key plan for unit location and orientation. E. & O.E.

KING

HOME 1501 S



3BD.41

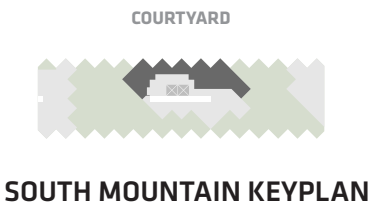
3 Bedroom + Family + Study
2 Bathroom

Total Living:
2476 ft²

Interior Living:
1999 ft²

Exterior Living:
477 ft²

LIVING/ DINING	11' 5" X 23' 7"
FAMILY RM	12' 0" X 12' 0"
MASTER BD	13' 7" X 11' 2"
BEDROOM 2	10' 10" X 9' 10"
BEDROOM 3	9' X 9' 10' 0"
STUDY	10' 9" X 10' 0"
TERRACE A	9' 1" X 6' 8"
TERRACE B	8' 3" X 6' 8"
TERRACE C	2' 8" X 8' 3"



All dimensions and specifications are approximate. Certain plans are reverse or mirror image. Balcony square footages are estimated and may vary from that stated. Please see Sales Representative for details. Furniture not included. Refer to key plan for unit location and orientation. E. & O.E.

KING

HOME 1502 S



3BD.42

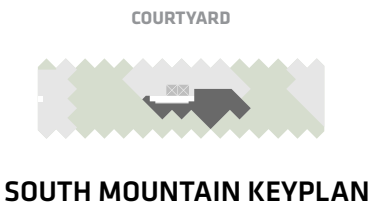
3 Bedroom + Study
2 Bathroom

Total Living:
1680 ft²

Interior Living:
1393 ft²

Exterior Living:
287 ft²

LIVING	9' 5" X 10' 10"
DINING	11' 3" X 8' 8"
MASTER BD	11' 7" X 11' 1"
BEDROOM 2	9' 0" X 9' 1"
BEDROOM 3	12' 9" X 11' 9"
TERRACE A	9' 1" X 9' 1"
TERRACE B	9' 1" X 6' 8"



All dimensions and specifications are approximate. Certain plans are reverse or mirror image. Balcony square footages are estimated and may vary from that stated. Please see Sales Representative for details. Furniture not included. Refer to key plan for unit location and orientation. E. & O.E.





KING STREET WEST

Published by Westbank Projects Corp, 2018

CONCEPT

Ian Gillespie
Entro Communications

TEXTS

Ian Gillespie
Bjarke Ingels/BIG
Mark Ryan

CONTRIBUTORS & COORDINATION

BIG
Public Work
Ian Gillespie
Jacqueline Che
Jonah Letovsky
Amanda McDougall
Kaitlyn Wong
Sean Gillespie
Ariele Peterson

BOOK DESIGN & PRODUCTION

Entro Communications

DESIGN TEAM

ARCHITECTURE

Bjarke Ingels
Thomas Christoffersen
Lorenz Krisai
Ryan Harvey
Andrea Zalewski

LANDSCAPE ARCHITECTURE

Marc Ryan
Virginia Fernandez Rincon

INTERIOR ARCHITECTURE

Francesca Portesine
Janie Green

CONTENT

SKETCHES & ILLUSTRATIONS

BIG
Public Work
Metropolitan Fine Printers

ARCHITECTURAL RENDERINGS

Hayes Davidson
BIG

PHOTOGRAPHY

Ben Rahn
Justin Wu
Derek Shapton
George Pimentel
Dennis Gocer
Ema Peter
Peter Aaron
Lukas Dong
B&B Italia
Ed White
Gwenael Lewis
Andrew Latreille
James KM Cheng
Roberto Zava
Mauricio J Calero

PREPRESS & PRINTING

Andora Graphics

BINDERY

Beck Bindery

©2018 Westbank Projects Corp. All rights reserved. No part of this publication may be reproduced, stored in a retrieval system, or transmitted in any form or by any means, electronic, mechanical, photocopying, recording, or otherwise, without prior consent of the publisher, except for short passages in reviews.

The purpose of this book is to outline the developer’s intended vision for the proposed “KING Toronto” development project. As such, all descriptions, illustrations and/or other depictions contained in this book of the proposed development and/ or development area surrounding the project site are conceptual only. This book should therefore not be relied upon as a representation or warranty, collateral agreement or condition, express or implied, of the final plans and specifications for the project, as the final plans and specifications are subject to the final review and approval of any applicable governmental authority and the developer and its consultants and engineers.

Dimensions, sizes, specifications, layouts and materials are approximate only and subject to change without notice. E. & O.E.

Printed in Canada.

ALLIED



westbank²⁵

BIG



LIVIND MURG

VOUIS LITTON

ALLIED



westbank²⁵

BIG